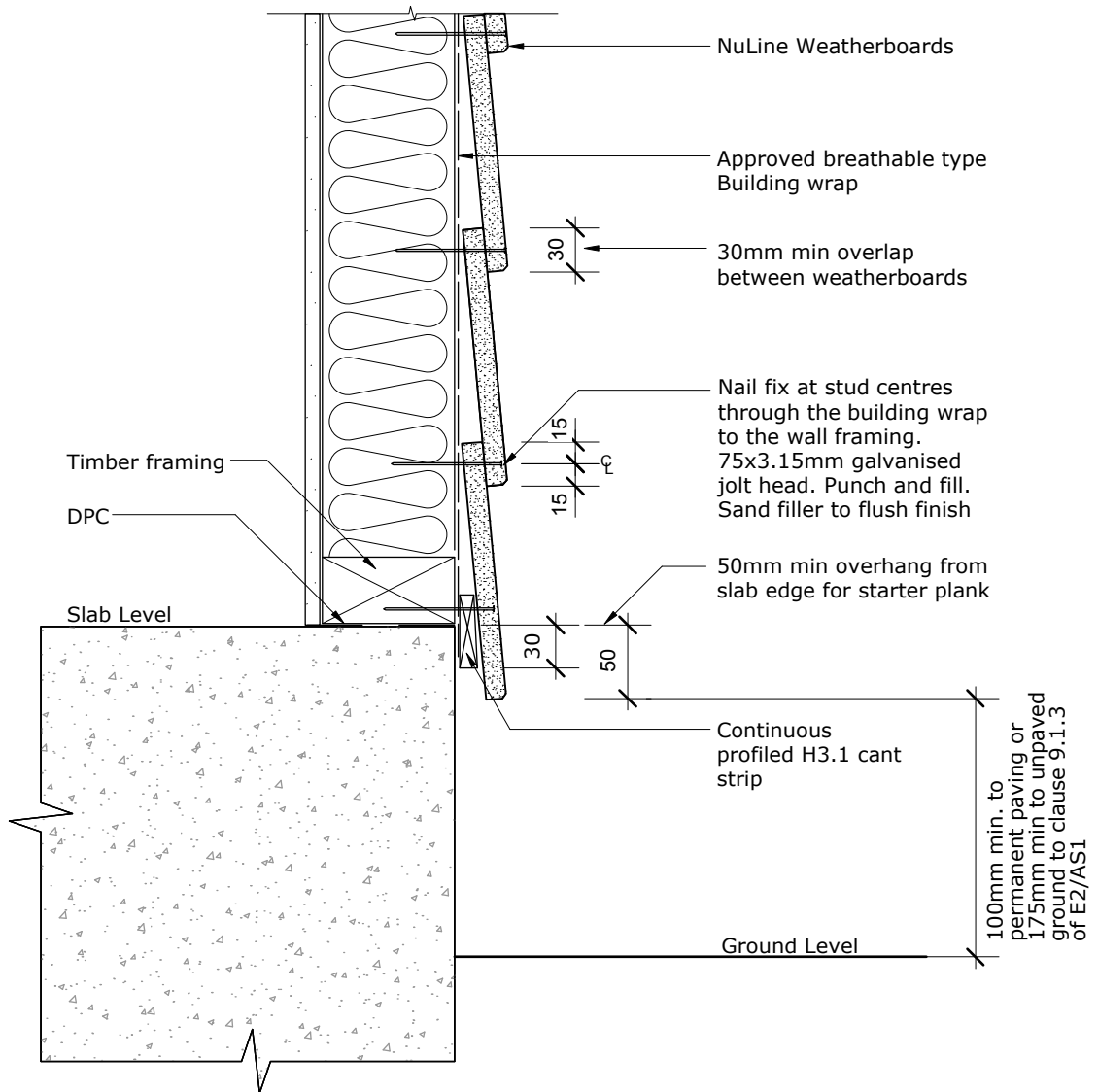
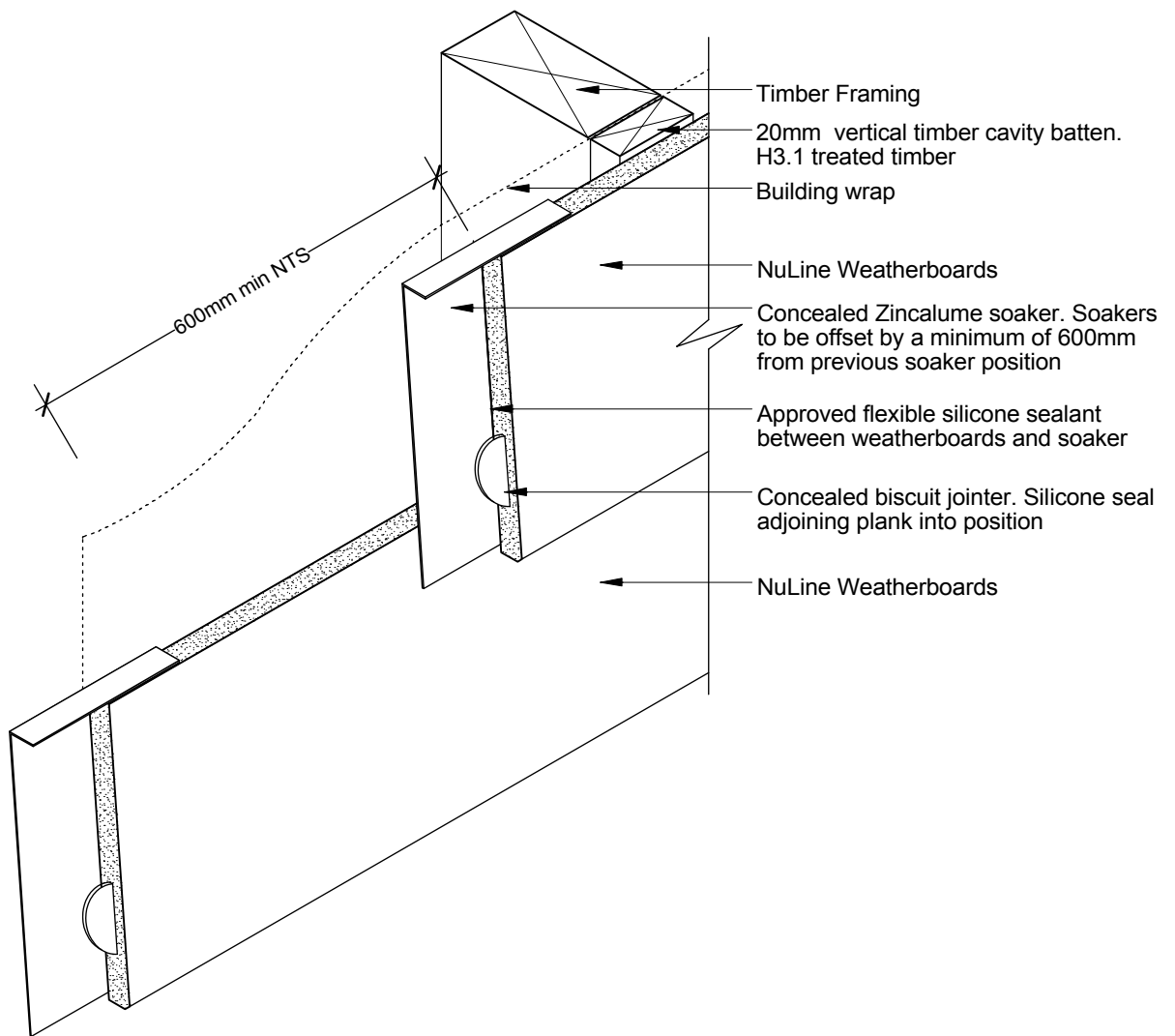
PROFILE **NuLine Weatherboards**DATE **Jan 2009**DETAIL **Foundation Detail  
Cavity Construction**SCALE **1:5 @ A4**DETAIL NO. **NU-01**



PROFILE NuLine Weatherboards  
 DETAIL Foundation Detail  
 Direct Fixed

DATE Jan 2009  
 SCALE 1:5 @ A4  
 DETAIL NO. NU-01 D

**BGC****Fibre Cement**

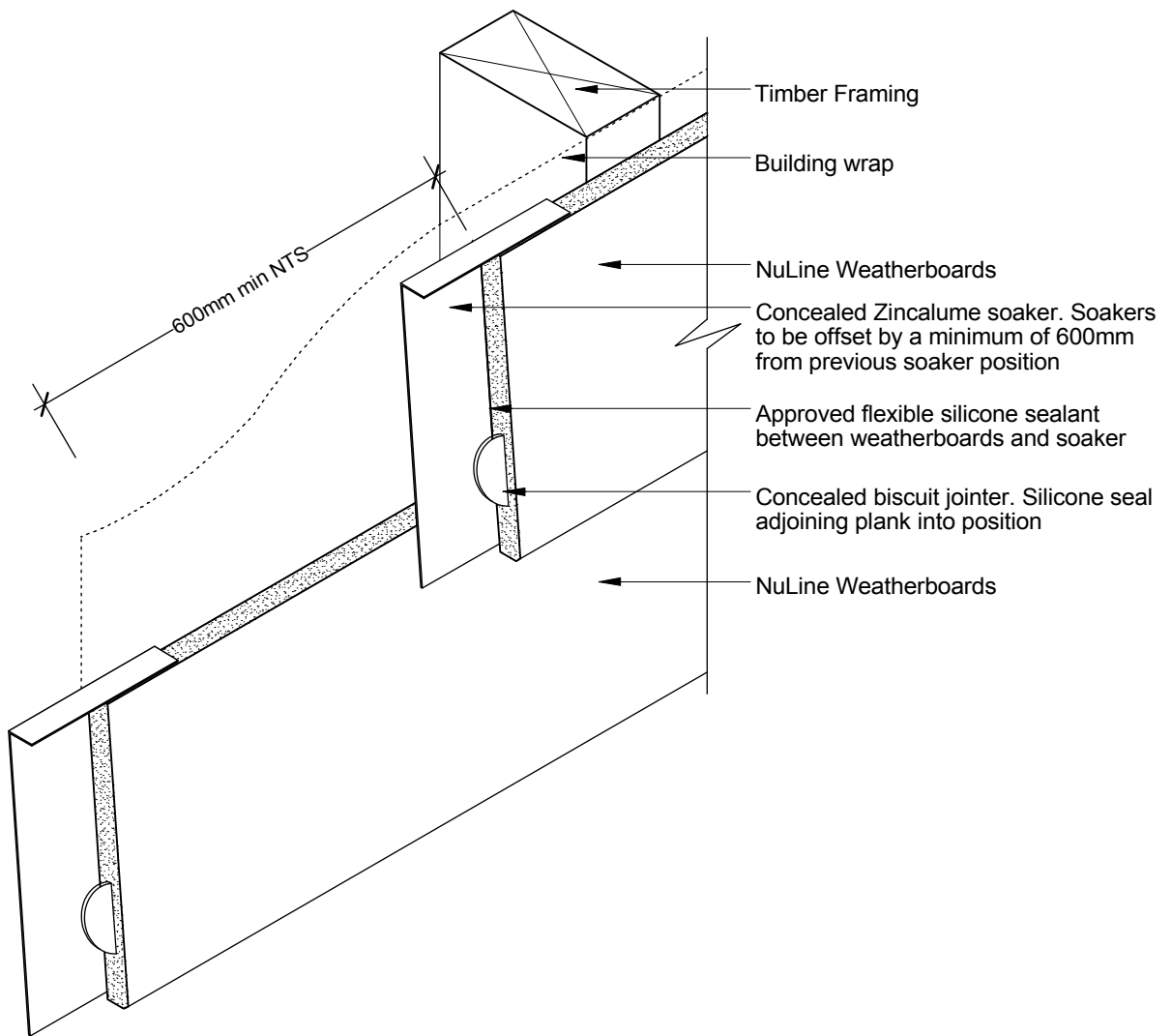
PROFILE NuLine Weatherboards

DATE Jan 2009

DETAIL Concealed Soaker Joint  
Cavity Construction

SCALE 1:5 @ A4

DETAIL NO. NU-02

**BGC****Fibre Cement**

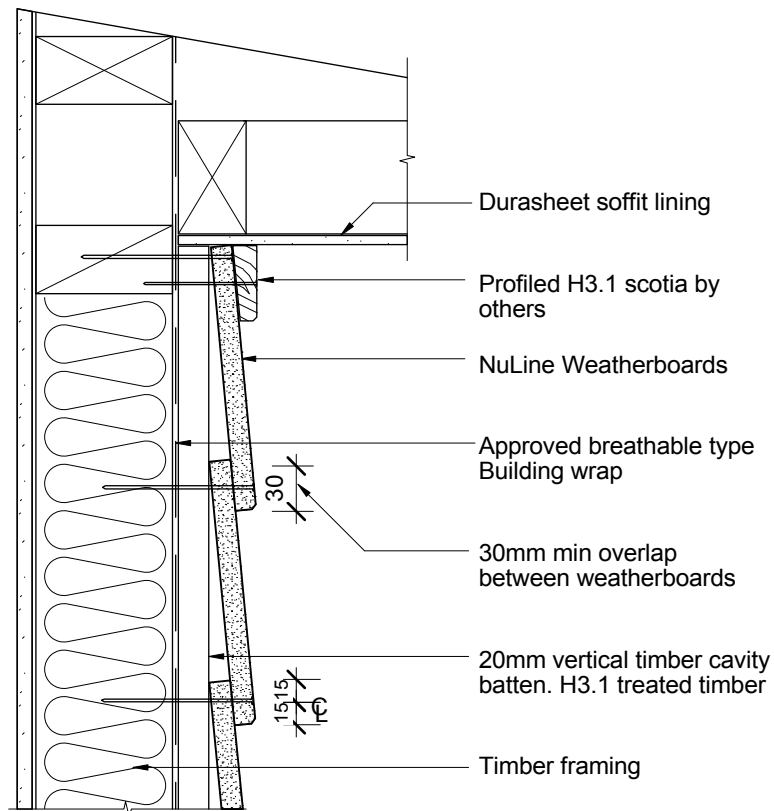
PROFILE NuLine Weatherboards

DATE Jan 2009

DETAIL Concealed Soaker Joint  
Direct fixed

SCALE 1:5 @ A4

DETAIL NO. NU-02 D

**BGC****Fibre Cement**

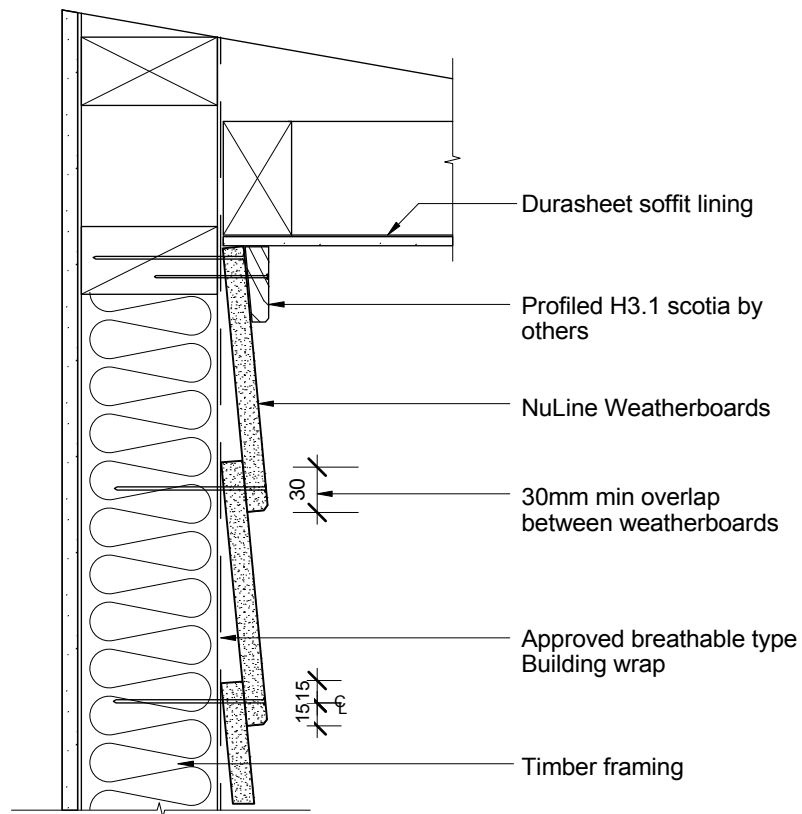
PROFILE NuLine Weatherboards

DATE Jan 2009

DETAIL Soffit Detail  
Cavity Construction

SCALE 1:5 @ A4

DETAIL NO. NU-03

**BGC****Fibre Cement**

PROFILE NuLine Weatherboards

DATE Jan 2009

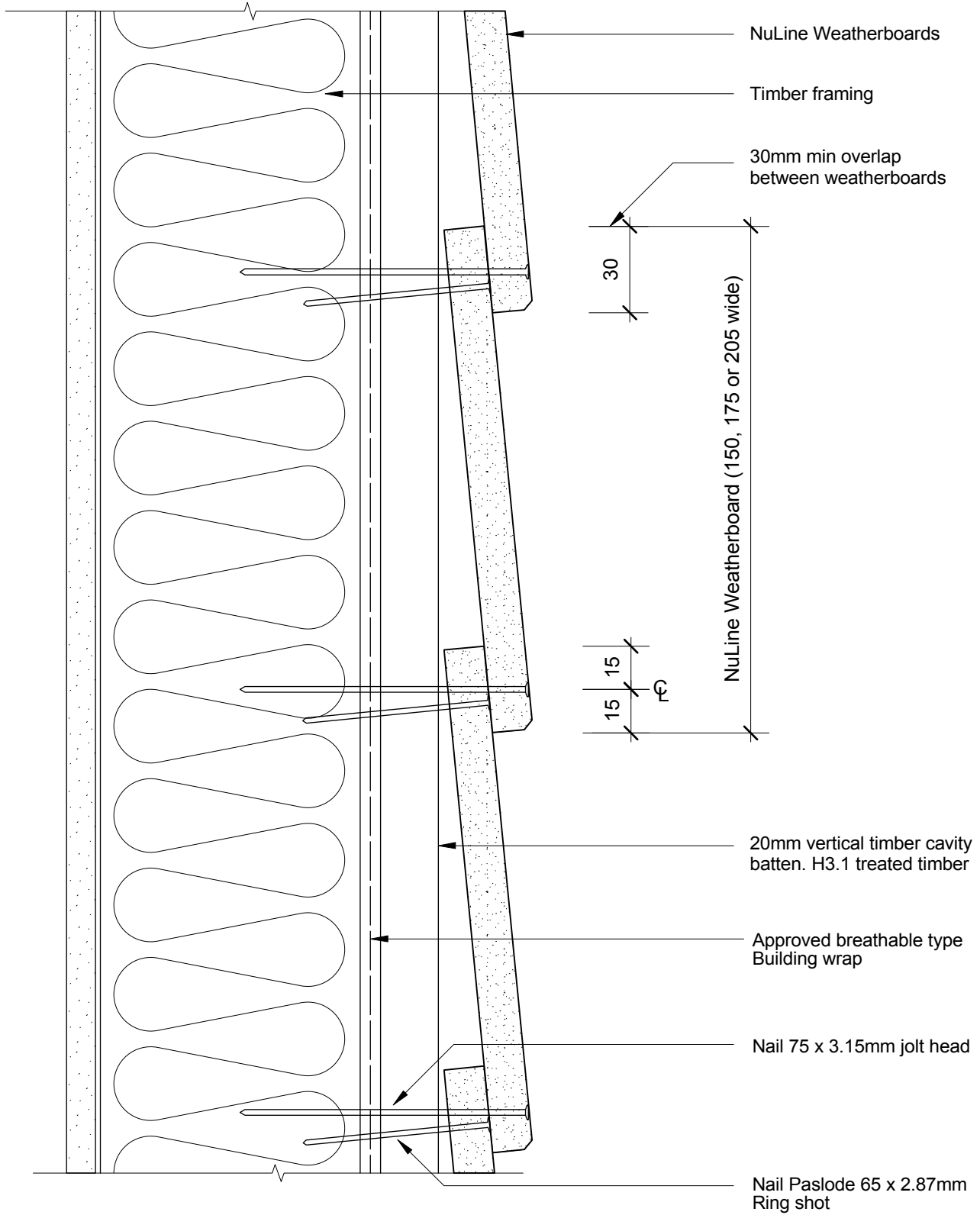
DETAIL Soffit Detail  
Direct Fixed

SCALE 1:5 @ A4

DETAIL NO. NU-03 D

# BGC

# Fibre Cement



PROFILE NuLine Weatherboards

DATE Jan 2009

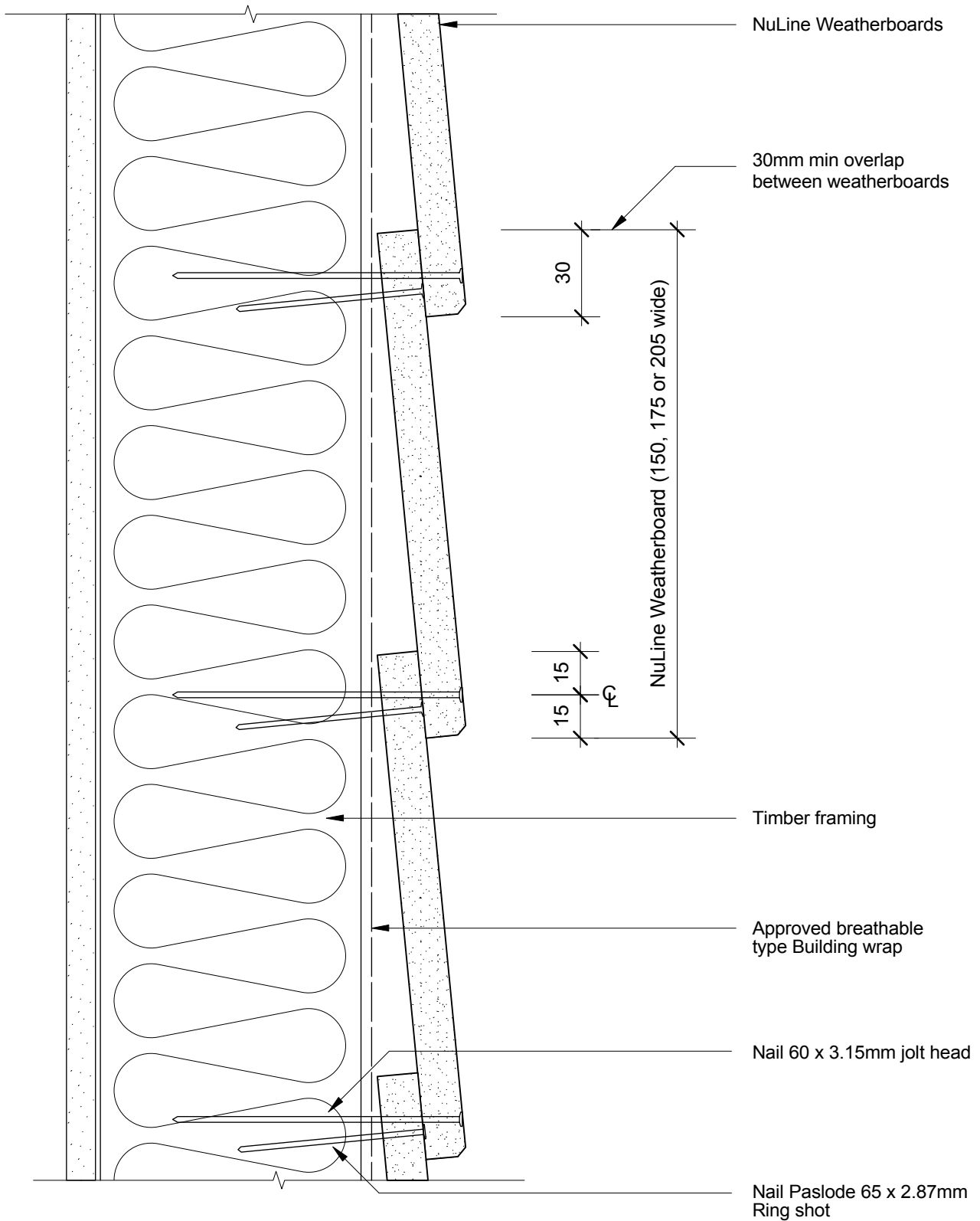
DETAIL Exposed Nail Fix  
Cavity Construction

SCALE 1:2 @ A4

DETAIL NO. NU-04

# BGC

# Fibre Cement



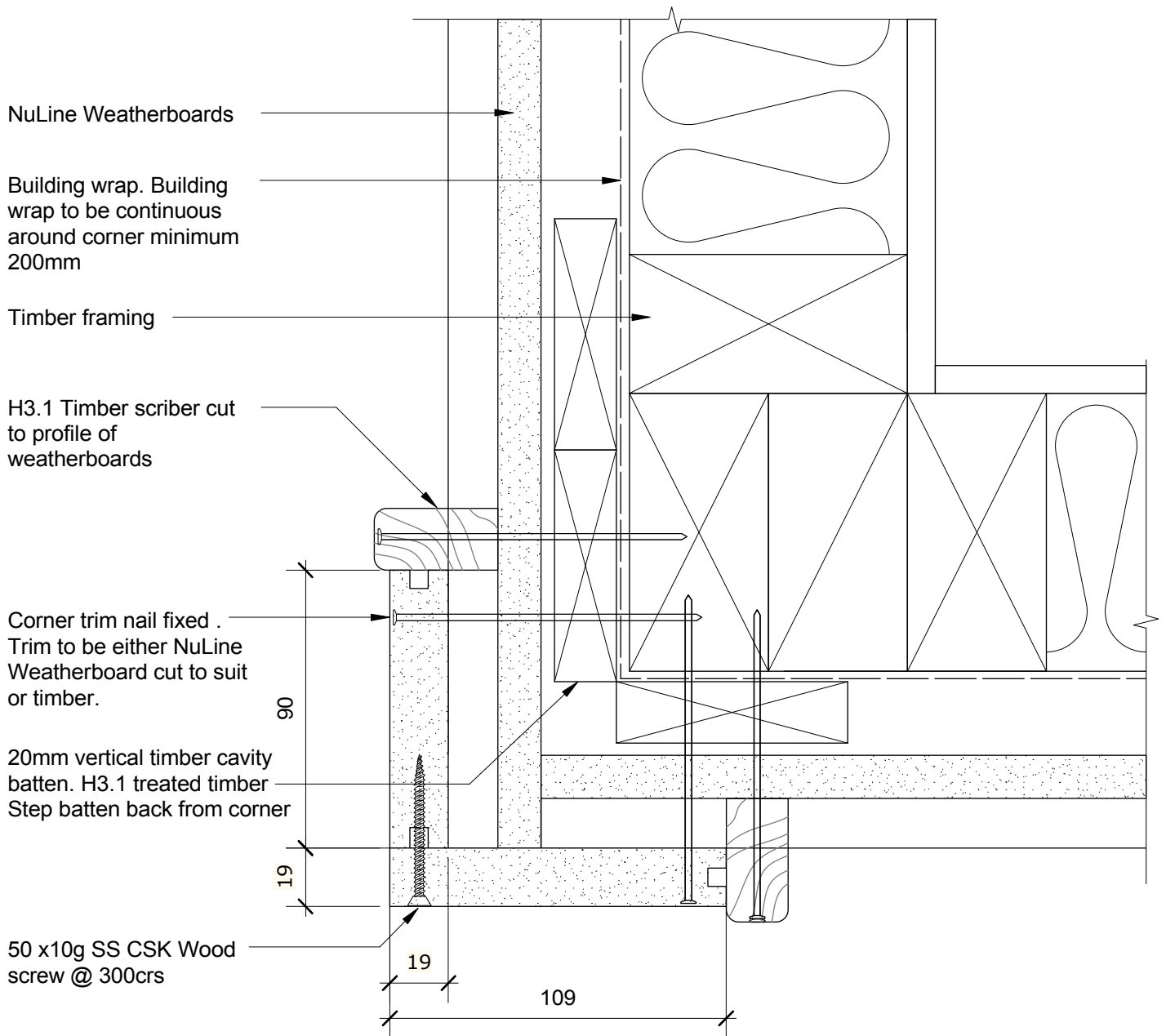
PROFILE NuLine Weatherboards

DATE Jan 2009

DETAIL Exposed Nail Fix  
Direct Fixed

SCALE 1:2 @ A4

DETAIL NO. NU-04 D

**BGC****Fibre Cement**

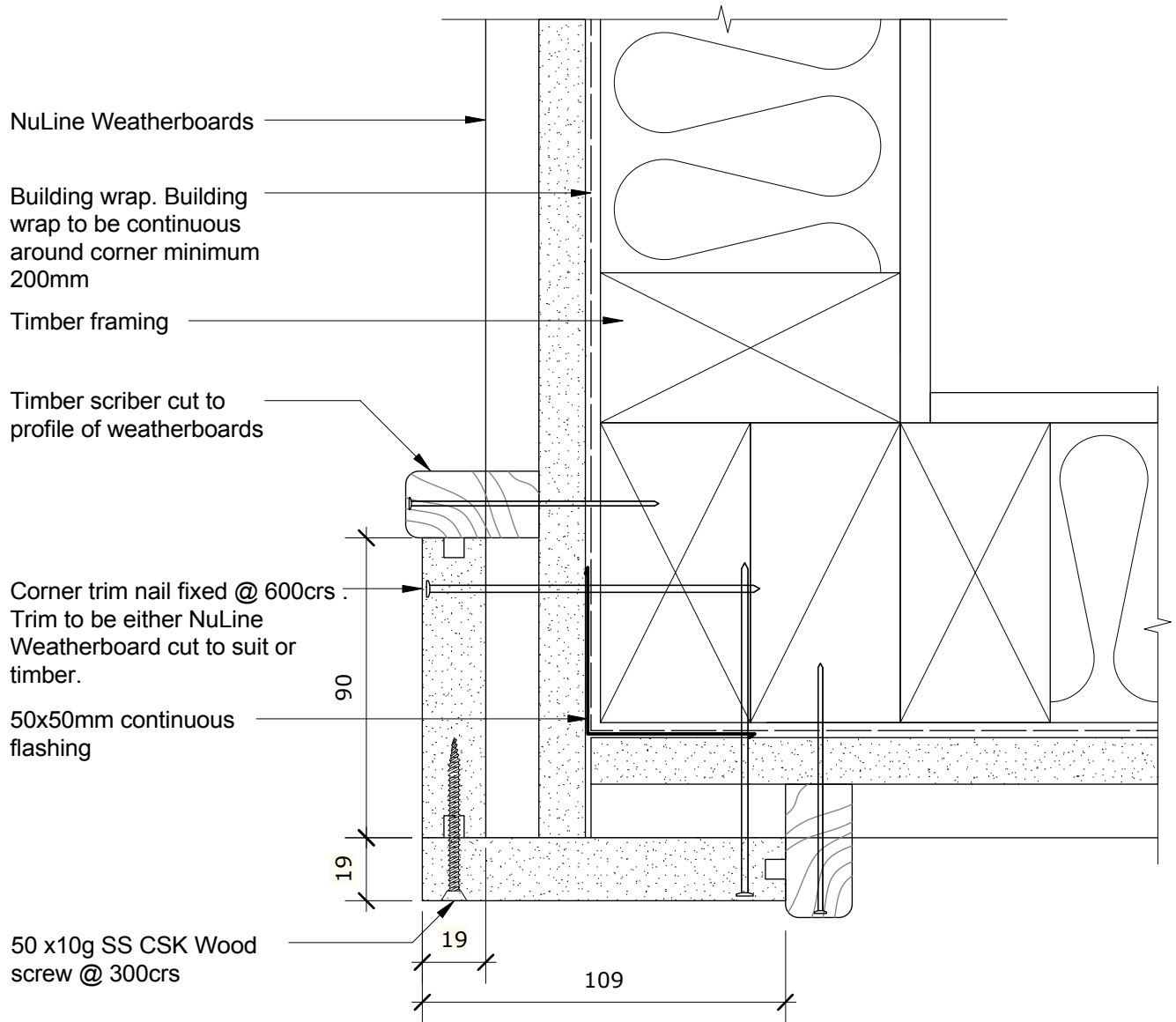
PROFILE NuLine Weatherboards

DATE Jan 2009

DETAIL External Boxed Corner  
Cavity Construction

SCALE 1:2 @ A4

DETAIL NO. NU-05



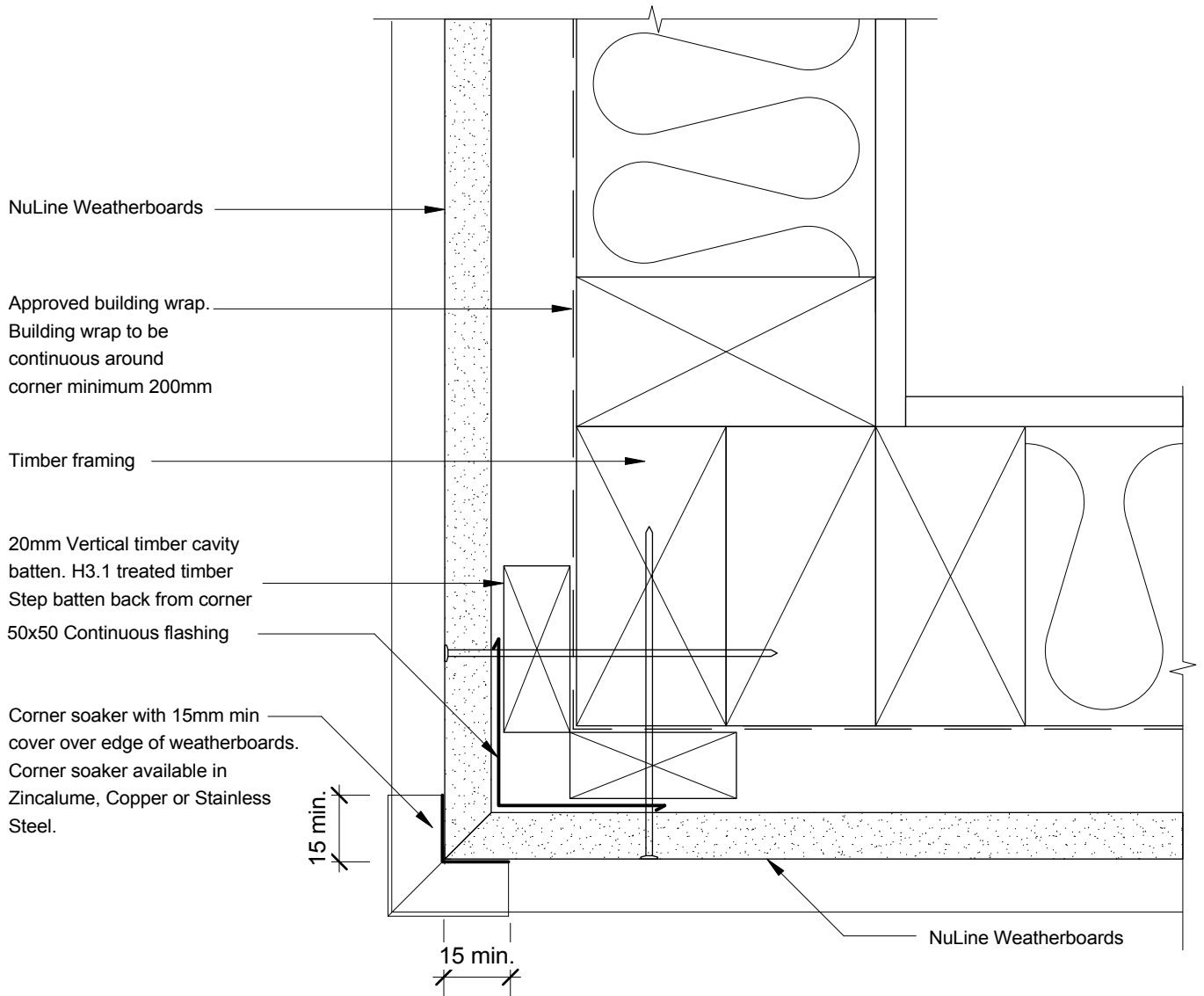
PROFILE NuLine Weatherboards

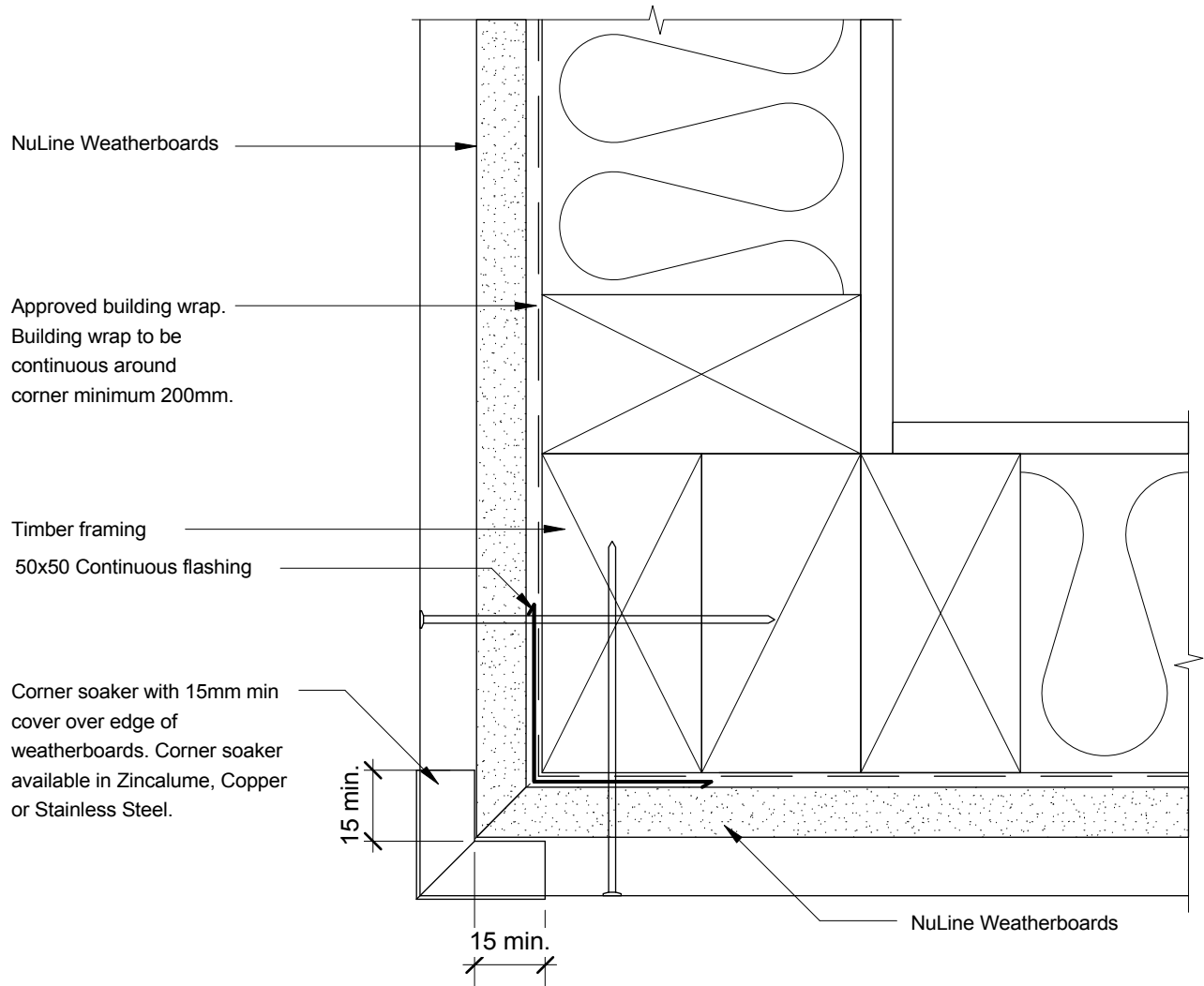
DATE Jan 2009

DETAIL External Boxed Corner  
Direct Fixed

SCALE 1:2 @ A4

DETAIL NO. NU-05 D

**BGC****Fibre Cement**PROFILE **NuLine Weatherboards**DATE **Jan 2009**DETAIL **External Soaker Corner  
Cavity Construction**SCALE **1:2 @ A4**DETAIL NO. **NU-06**

**BGC****Fibre Cement**

PROFILE NuLine Weatherboards

DATE Jan 2009

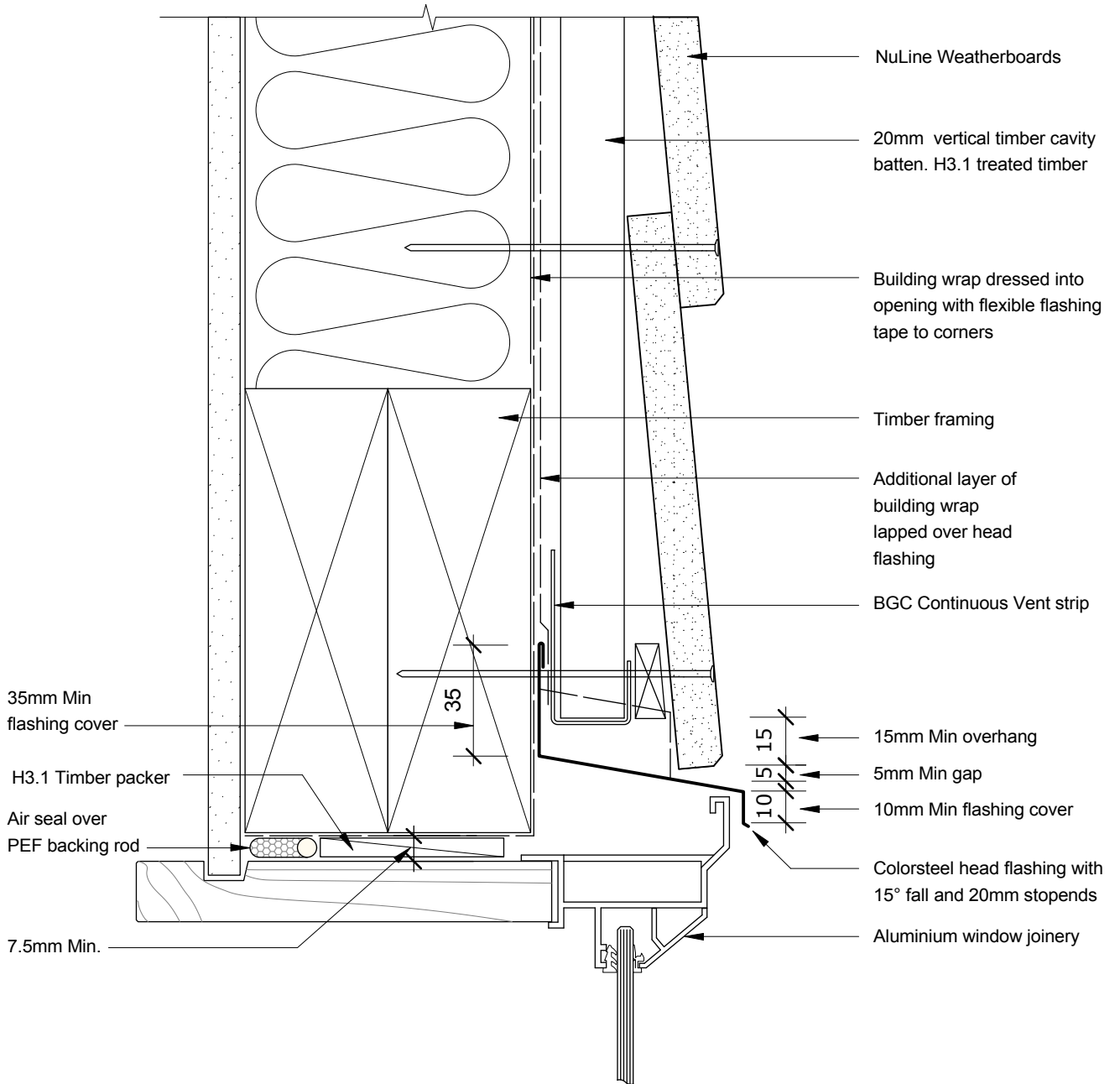
DETAIL External Soaker Corner  
Direct Fixed

SCALE 1:2 @ A4

DETAIL NO. NU-06 D

# BGC

# Fibre Cement



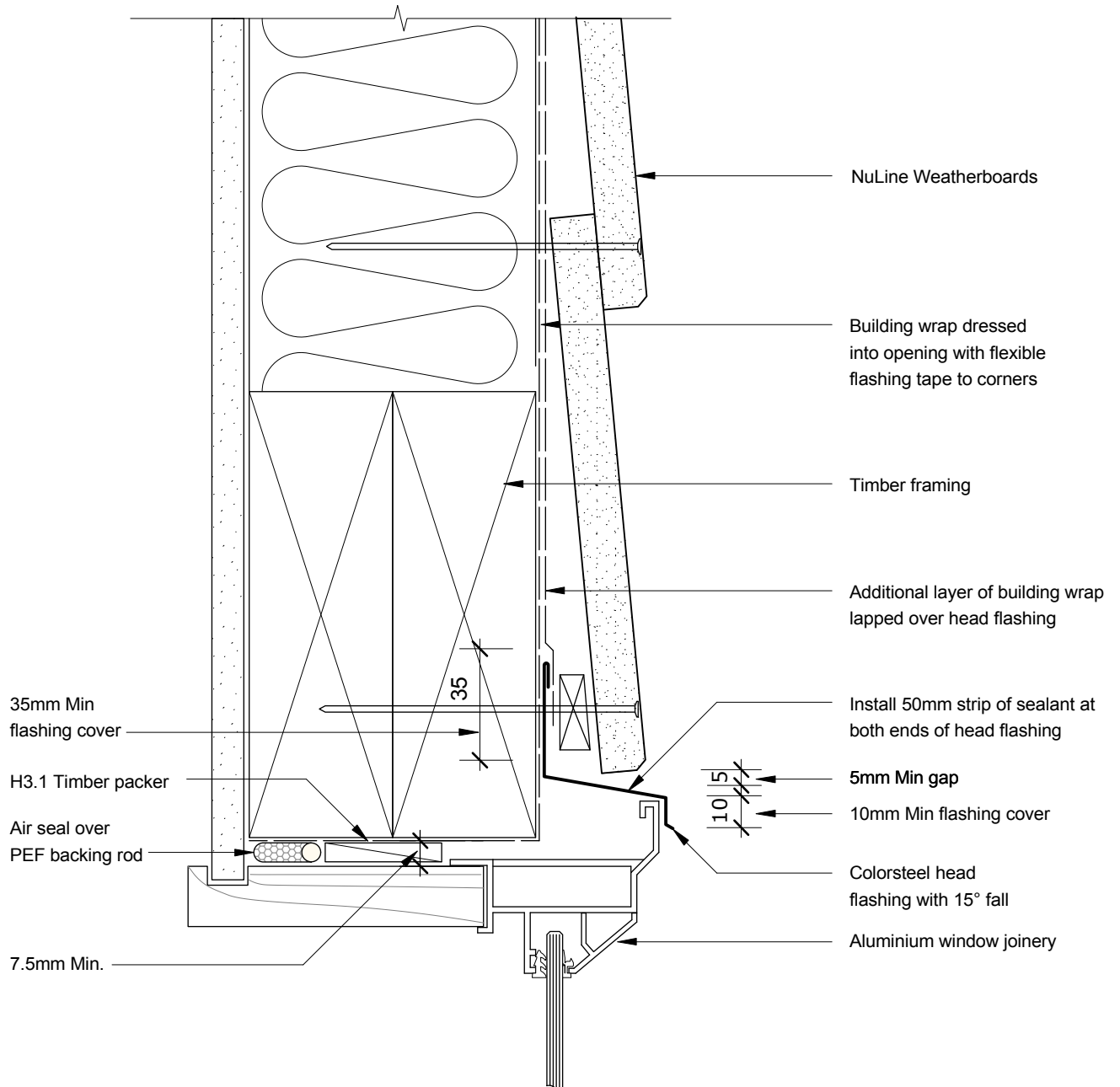
PROFILE NuLine Weatherboards

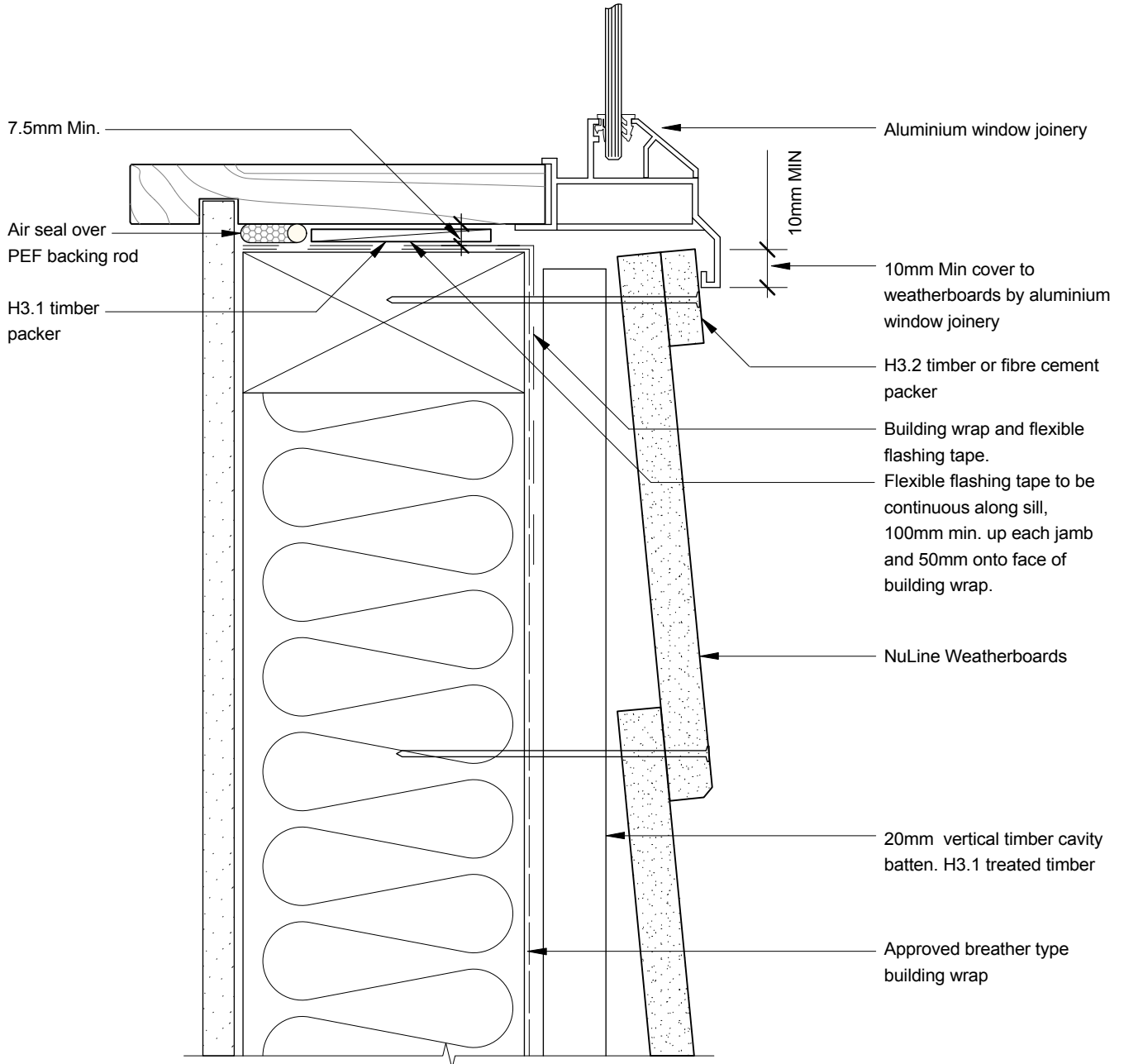
DATE Jan 2009

DETAIL Window Head  
Cavity Construction

SCALE 1:2 @ A4

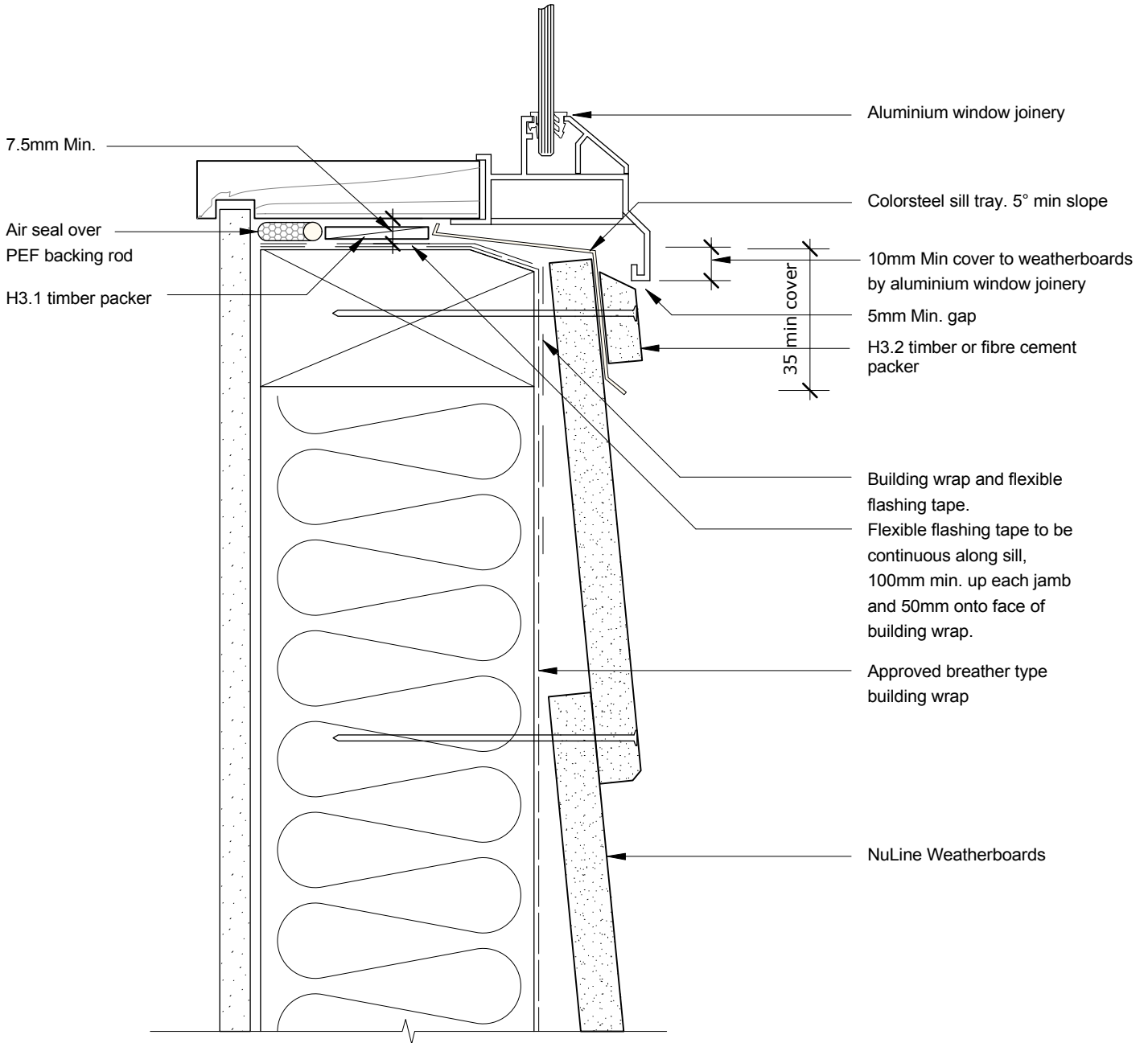
DETAIL NO. NU-07

**BGC****Fibre Cement**PROFILE **NuLine Weatherboards**DATE **Jan 2009**DETAIL **Window Head  
Direct Fixed**SCALE **1:2 @ A4**DETAIL NO. **NU-07 D**

**BGC****Fibre Cement**PROFILE **NuLine Weatherboards**DATE **Jan 2009**DETAIL **Window Sill  
Cavity Construction**SCALE **1:2 @ A4**DETAIL NO. **NU-08**

# BGC

# Fibre Cement



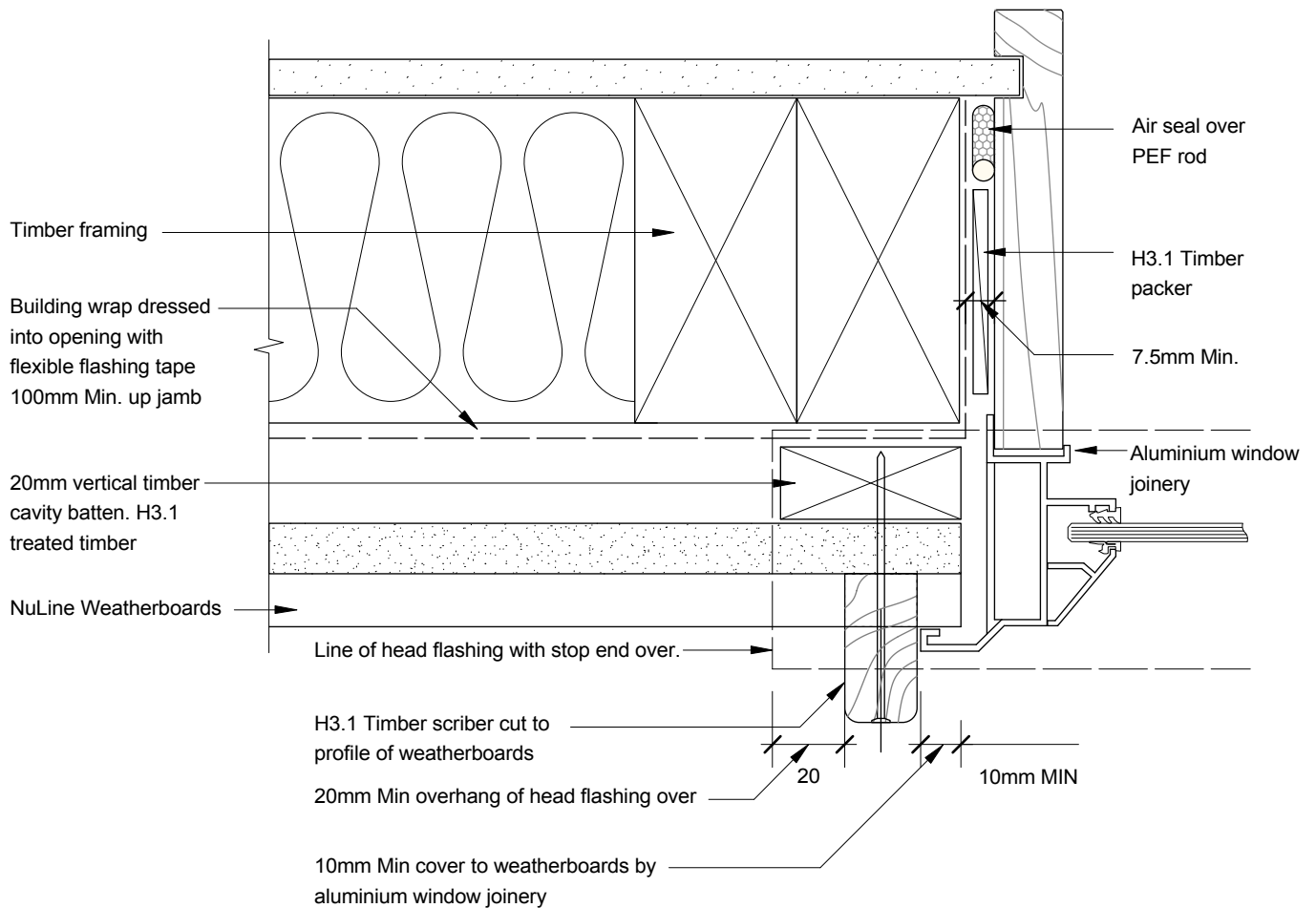
PROFILE NuLine Weatherboards

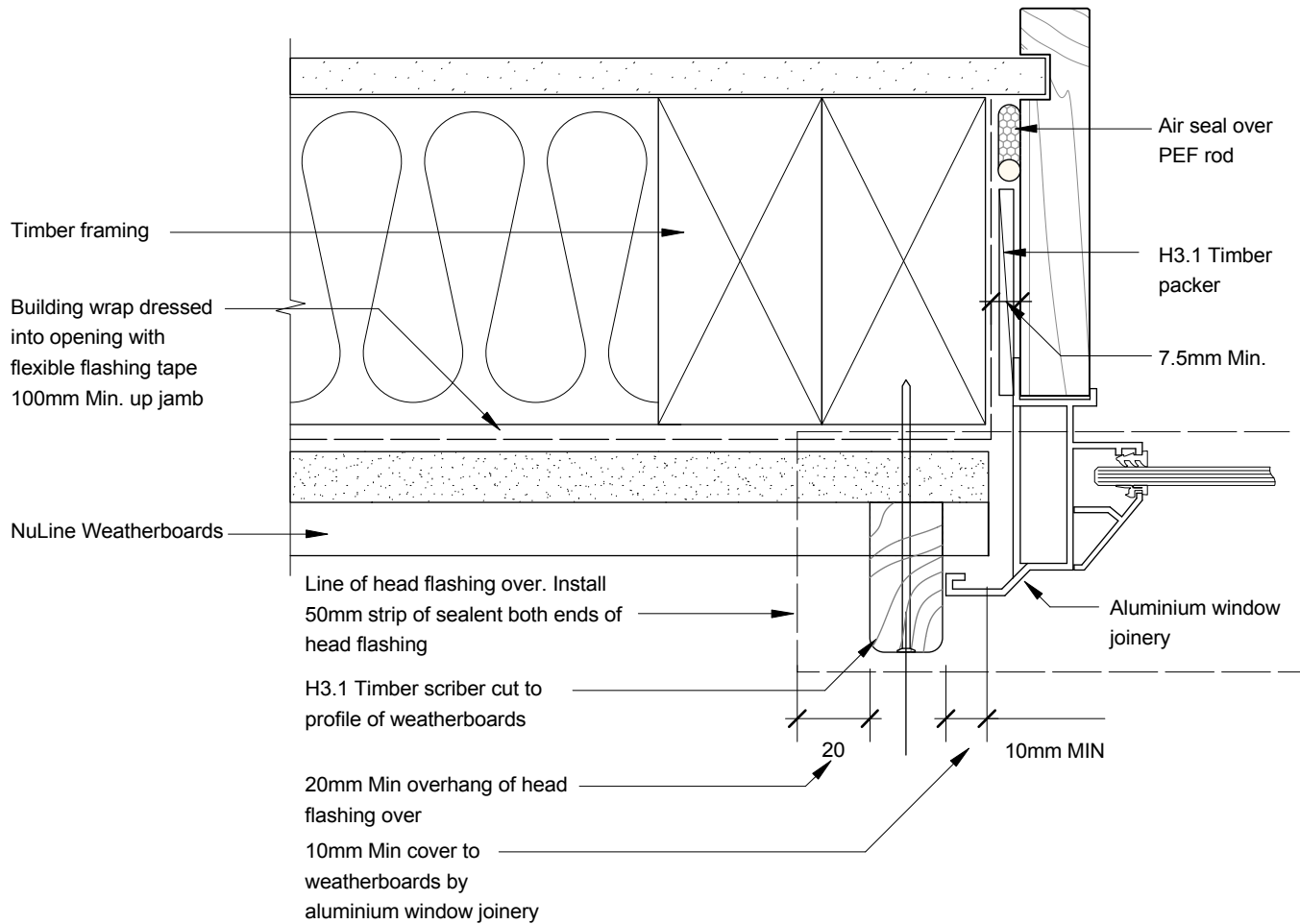
DATE Jan 2009

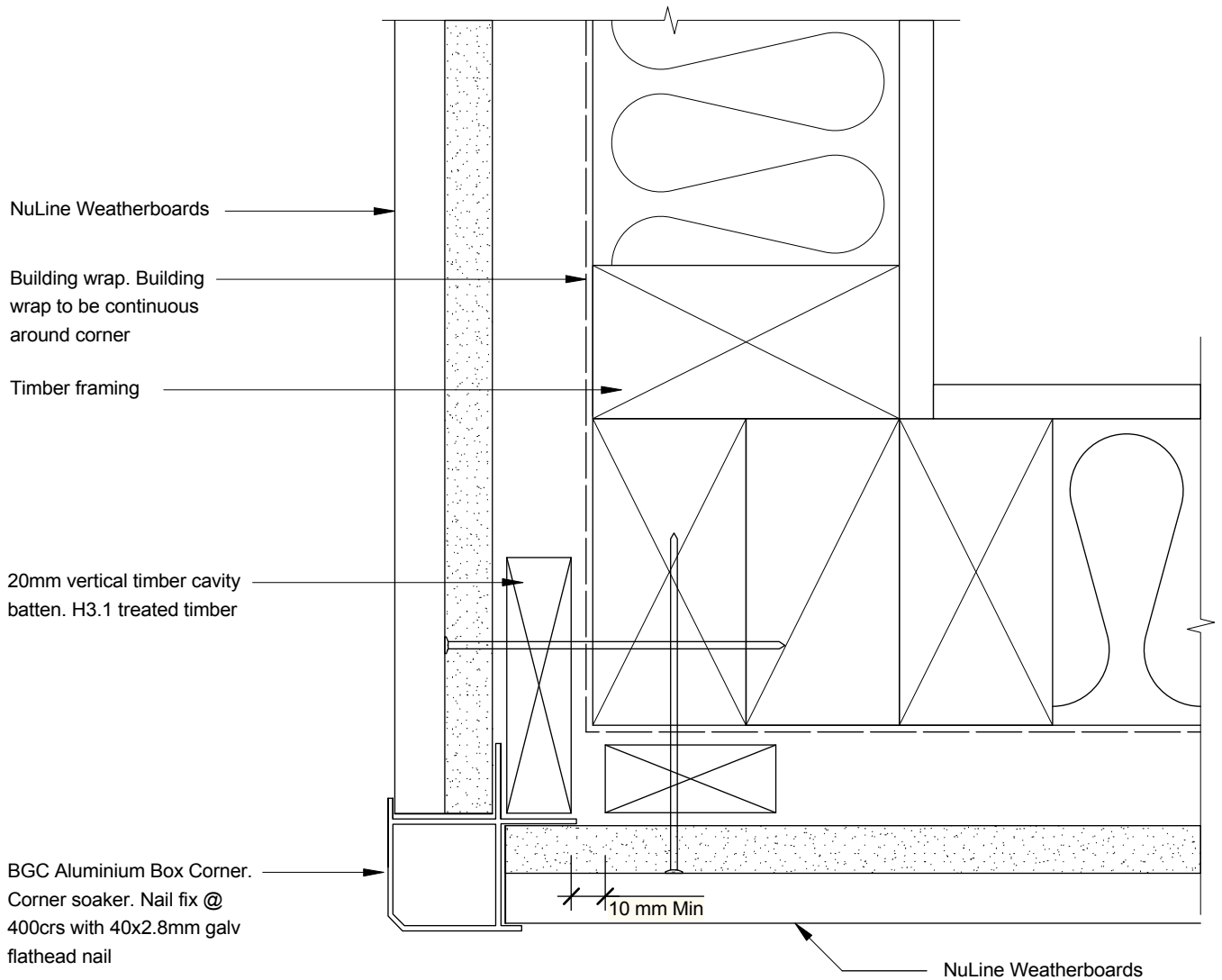
DETAIL Window Sill  
Direct Fixed

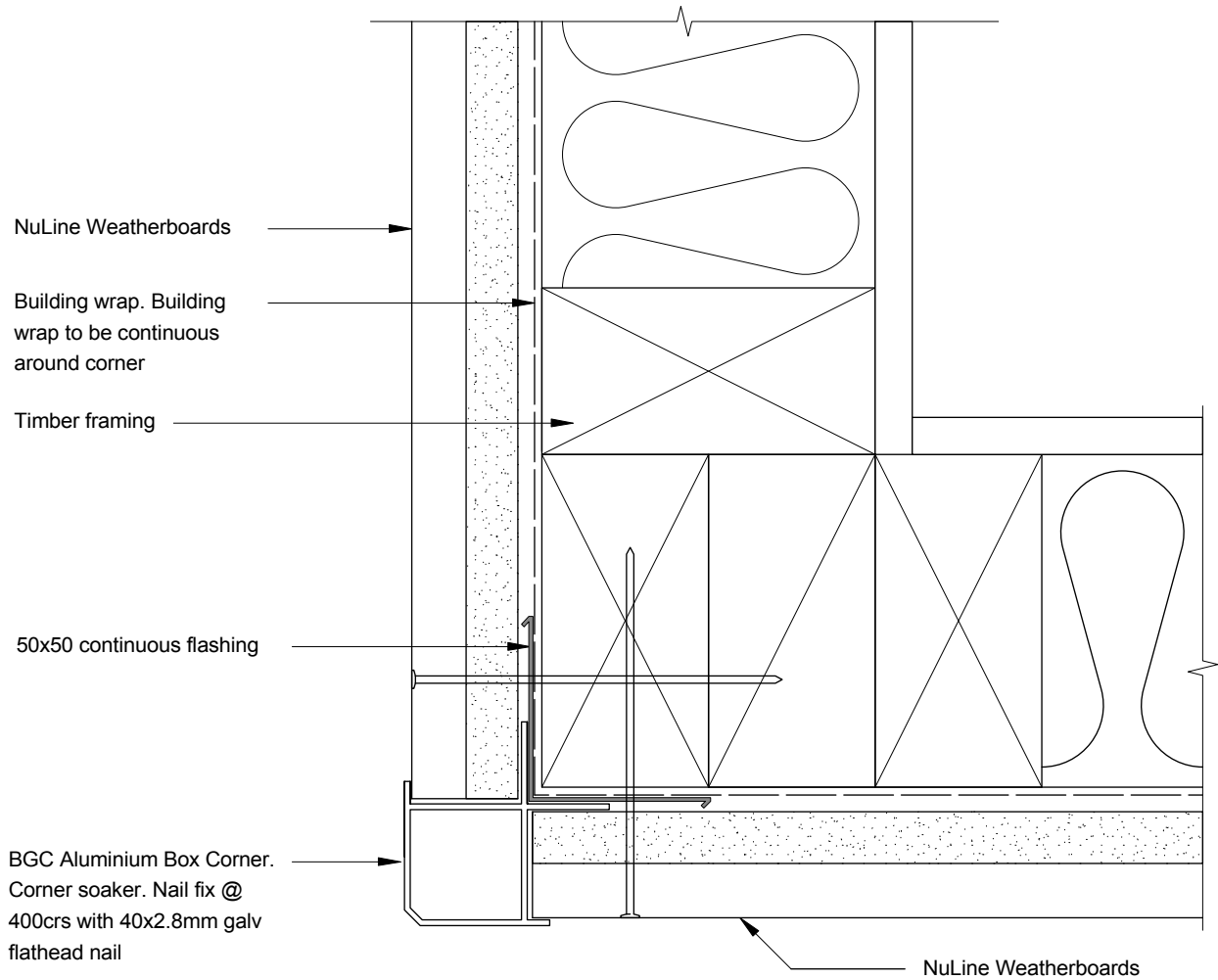
SCALE 1:2 @ A4

DETAIL NO. NU-08 D

**BGC****Fibre Cement**PROFILE **NuLine Weatherboards**DATE **Jan 2009**DETAIL **Window Jamb  
Cavity Construction**SCALE **1:2 @ A4**DETAIL NO. **NU-09**

**BGC****Fibre Cement**PROFILE **NuLine Weatherboards**DATE **Jan 2009**DETAIL **Window Jamb  
Direct Fixed**SCALE **1:2 @ A4**DETAIL NO. **NU-09 D**

**BGC****Fibre Cement**PROFILE **NuLine Weatherboards**DATE **Jan 2009**DETAIL **External Corner Detail with BGC Profile  
Cavity Construction**SCALE **1:2 @ A4**DETAIL NO. **NU-10**

**BGC****Fibre Cement**

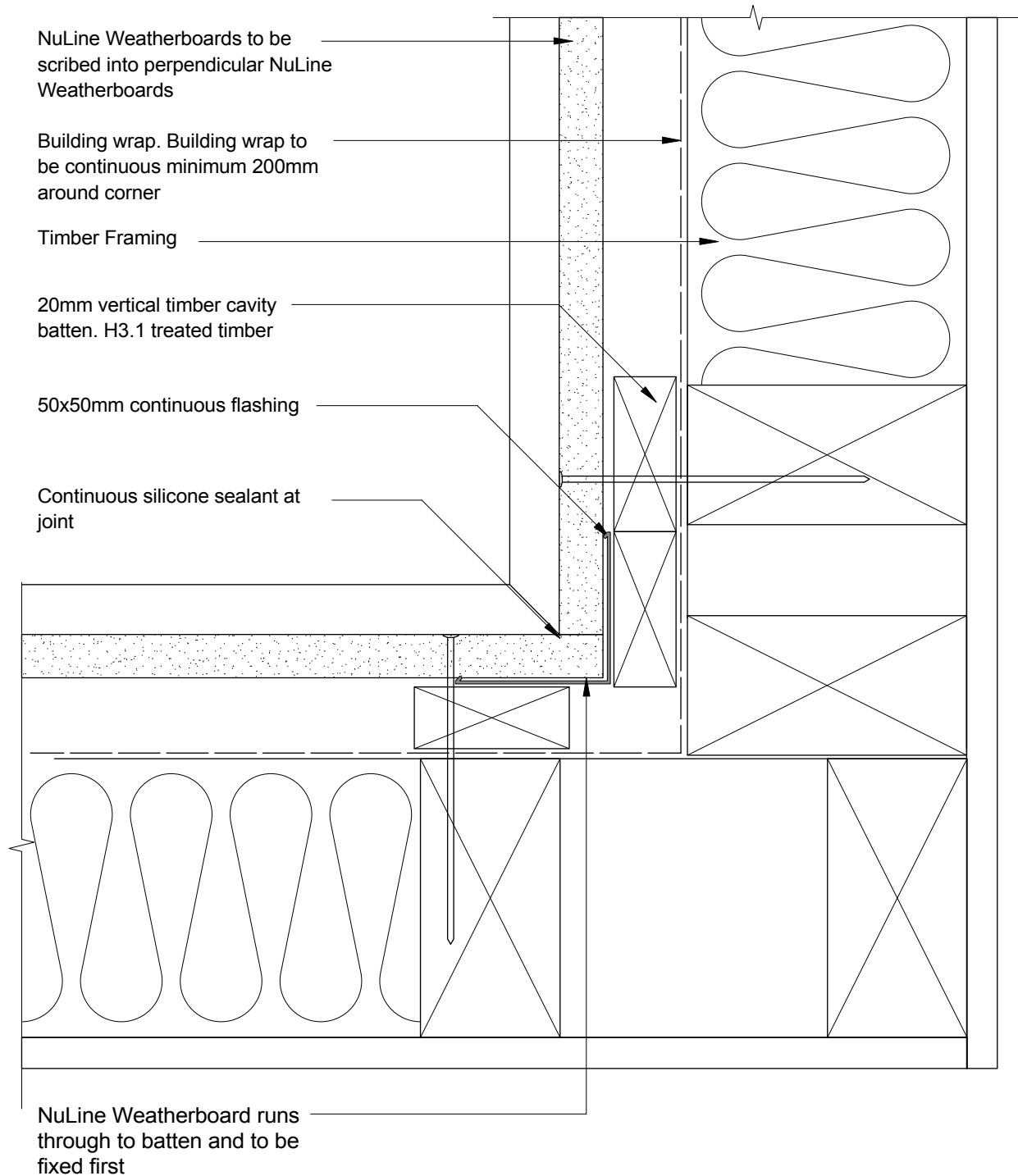
PROFILE NuLine Weatherboards

DATE Jan 2009

DETAIL External Corner Detail with BGC Profile  
Direct Fixed

SCALE 1:2 @ A4

DETAIL NO. NU-10 D



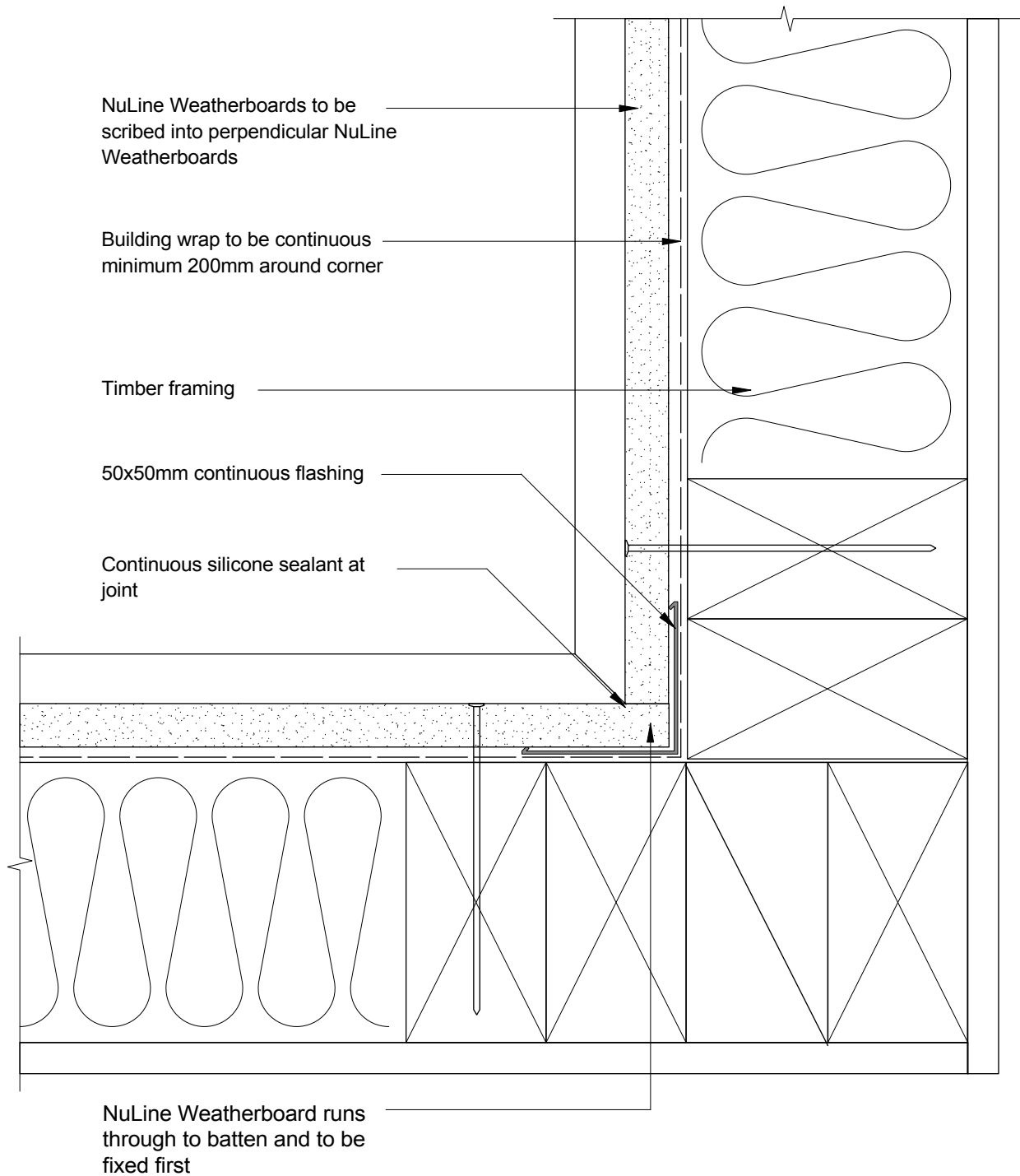
PROFILE NuLine Weatherboards

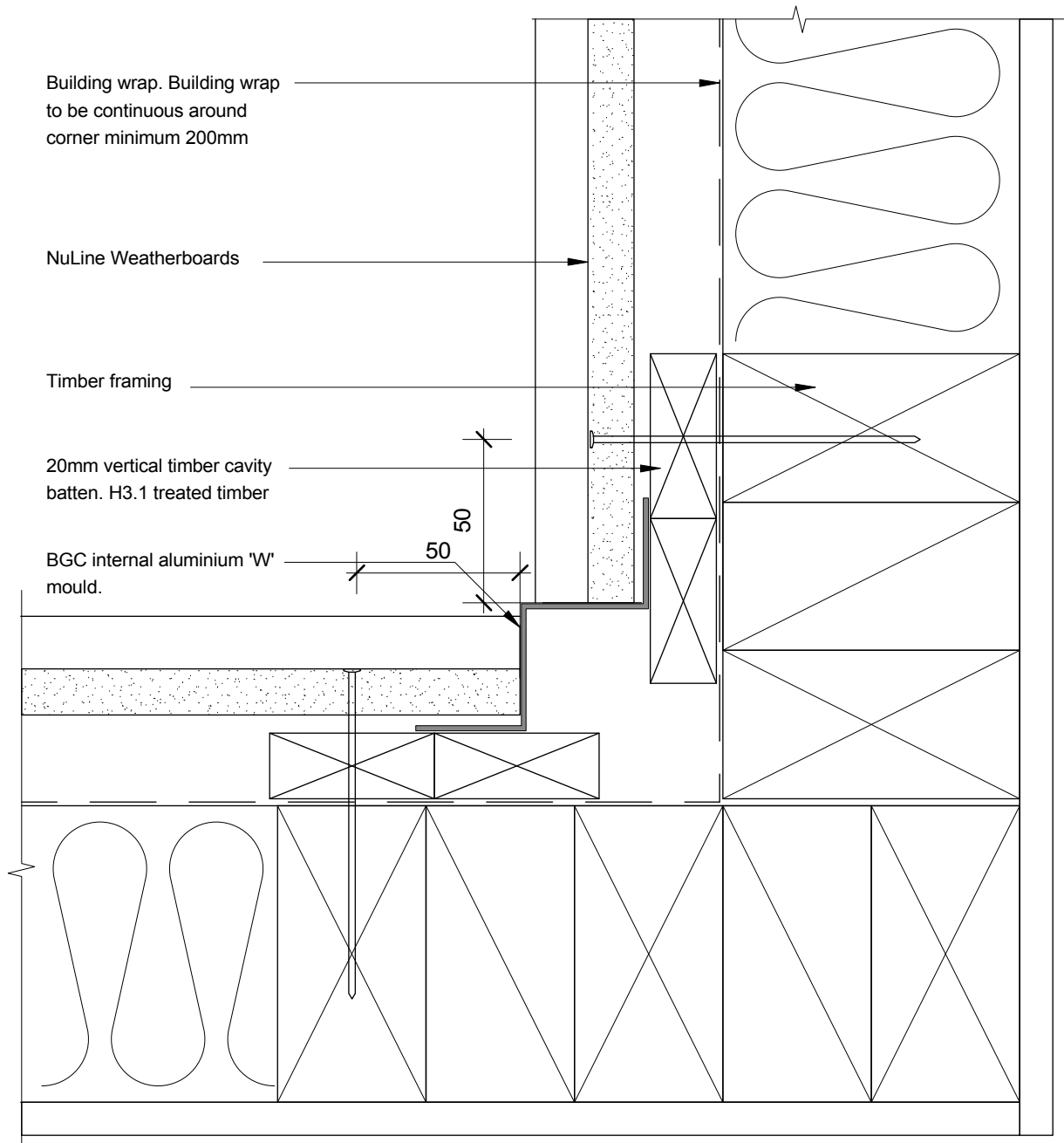
DATE Jan 2009

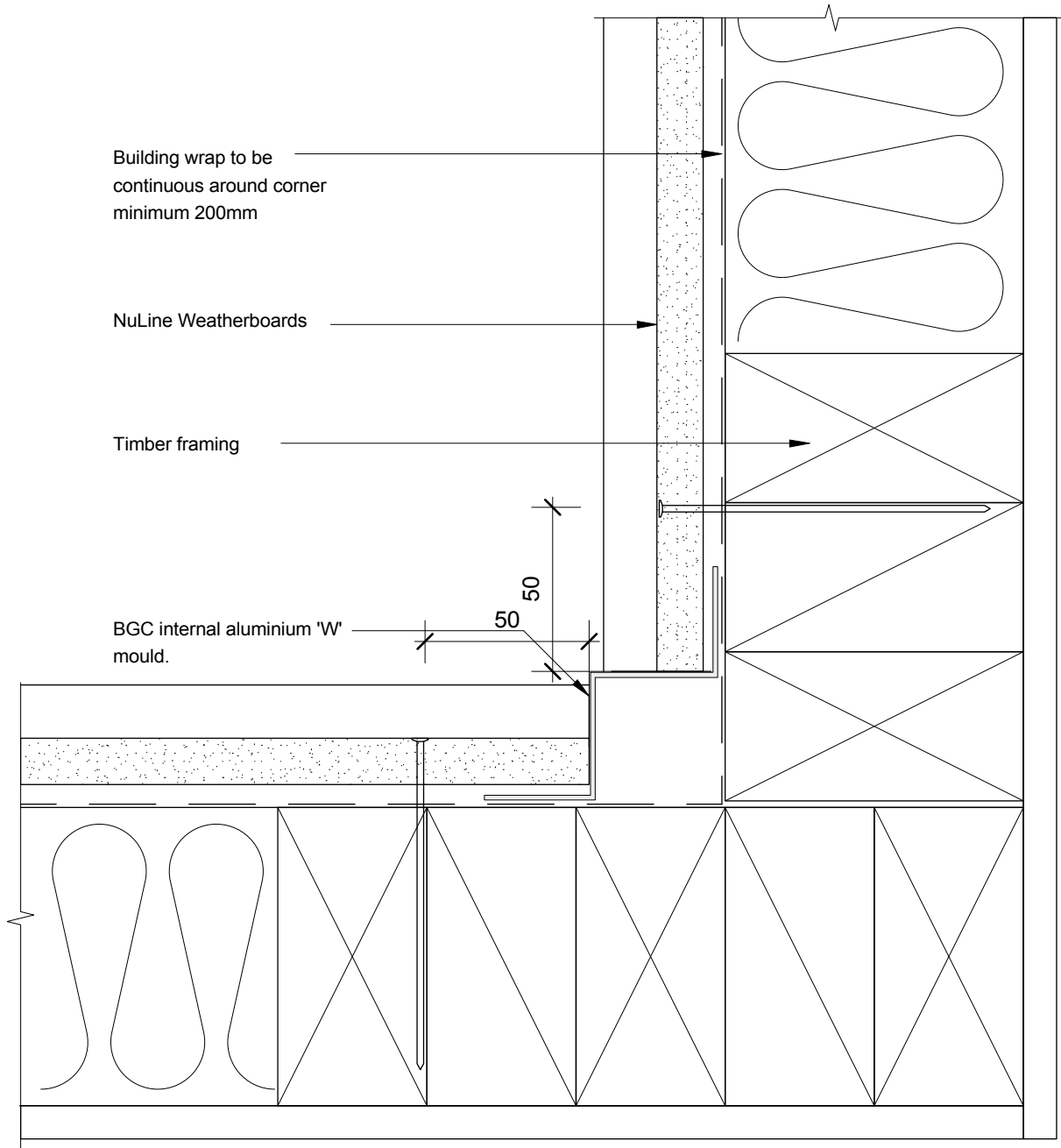
DETAIL Internal Corner Detail  
Cavity Construction

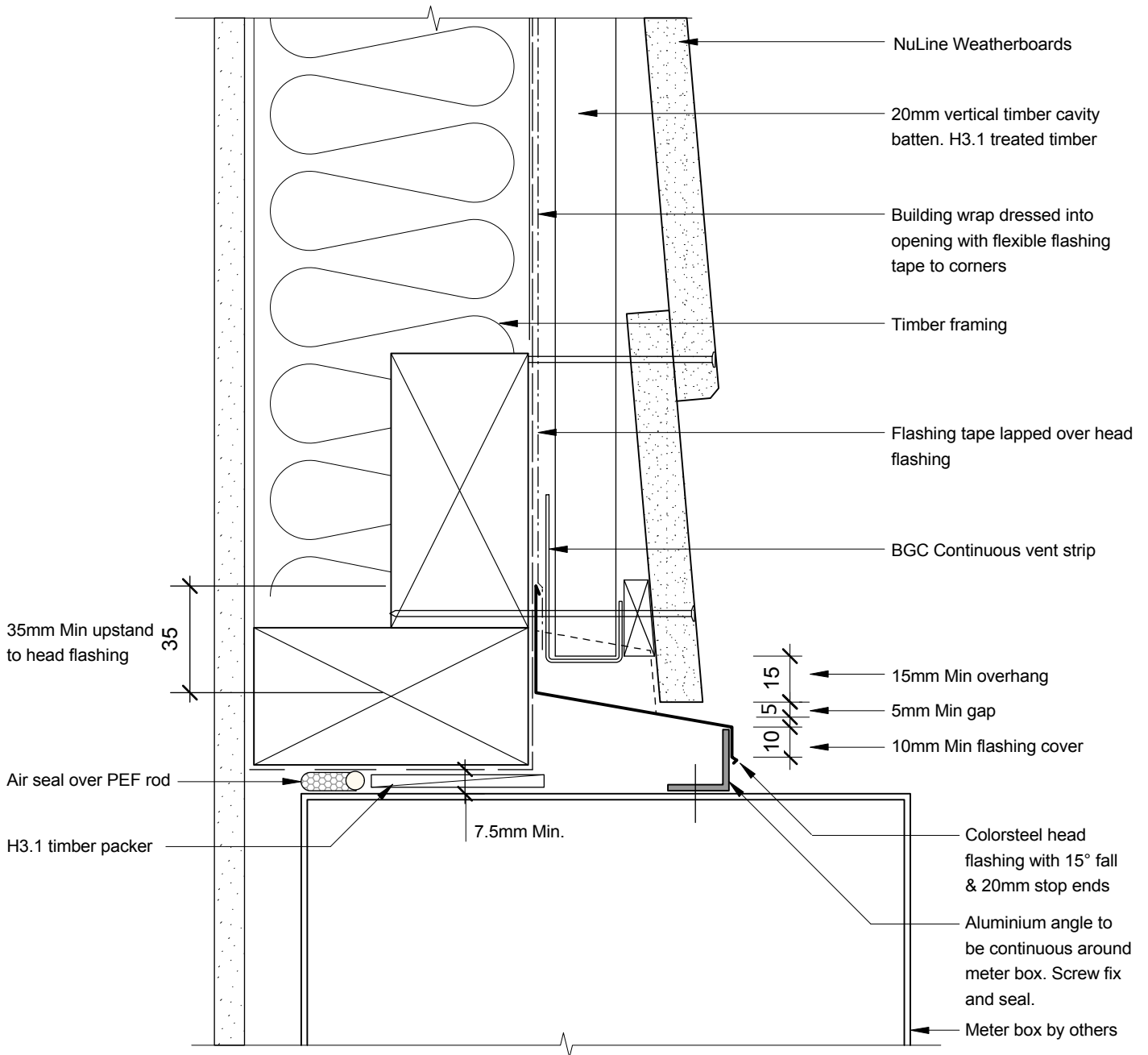
SCALE 1:2 @ A4

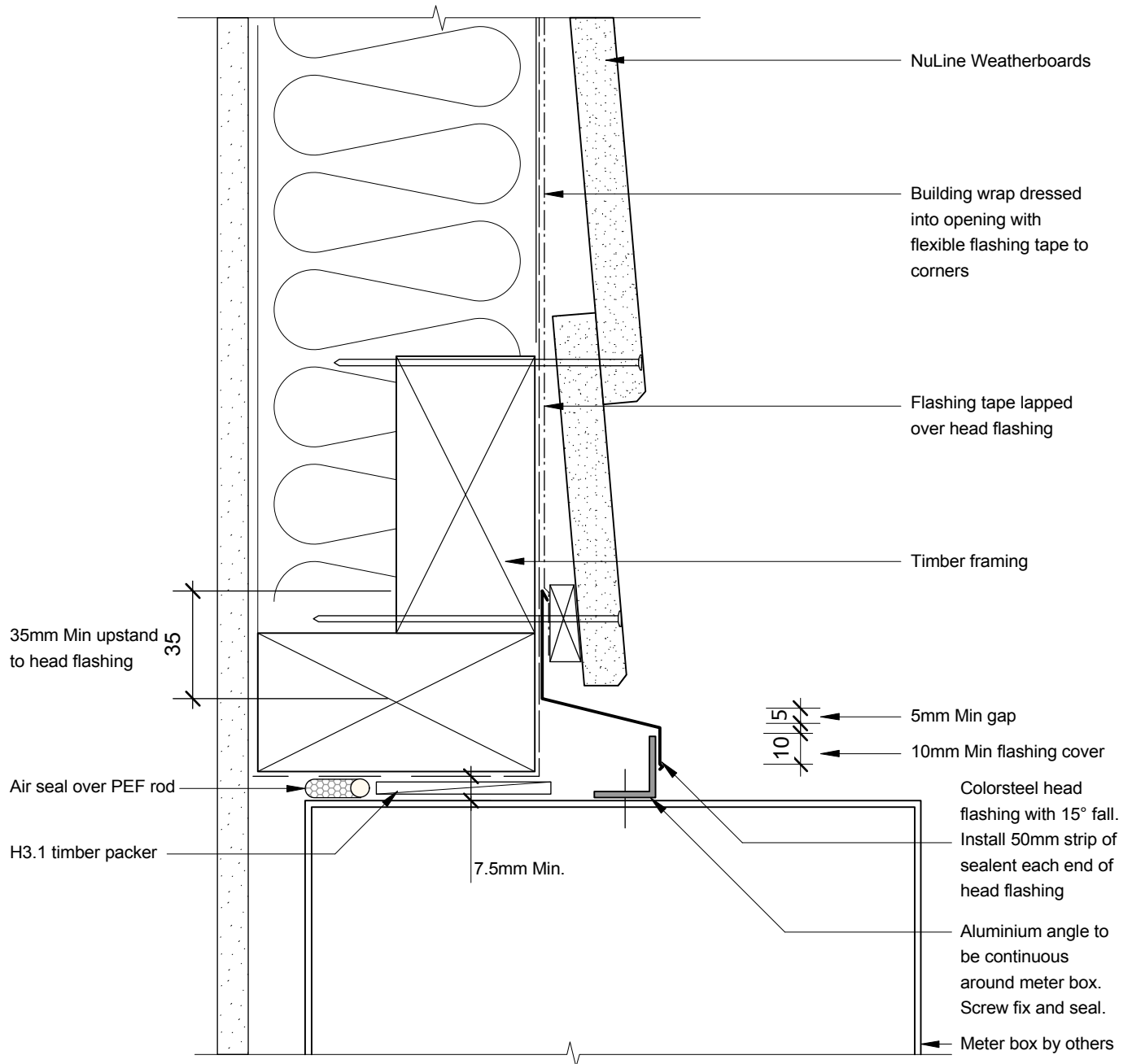
DETAIL NO. NU-11

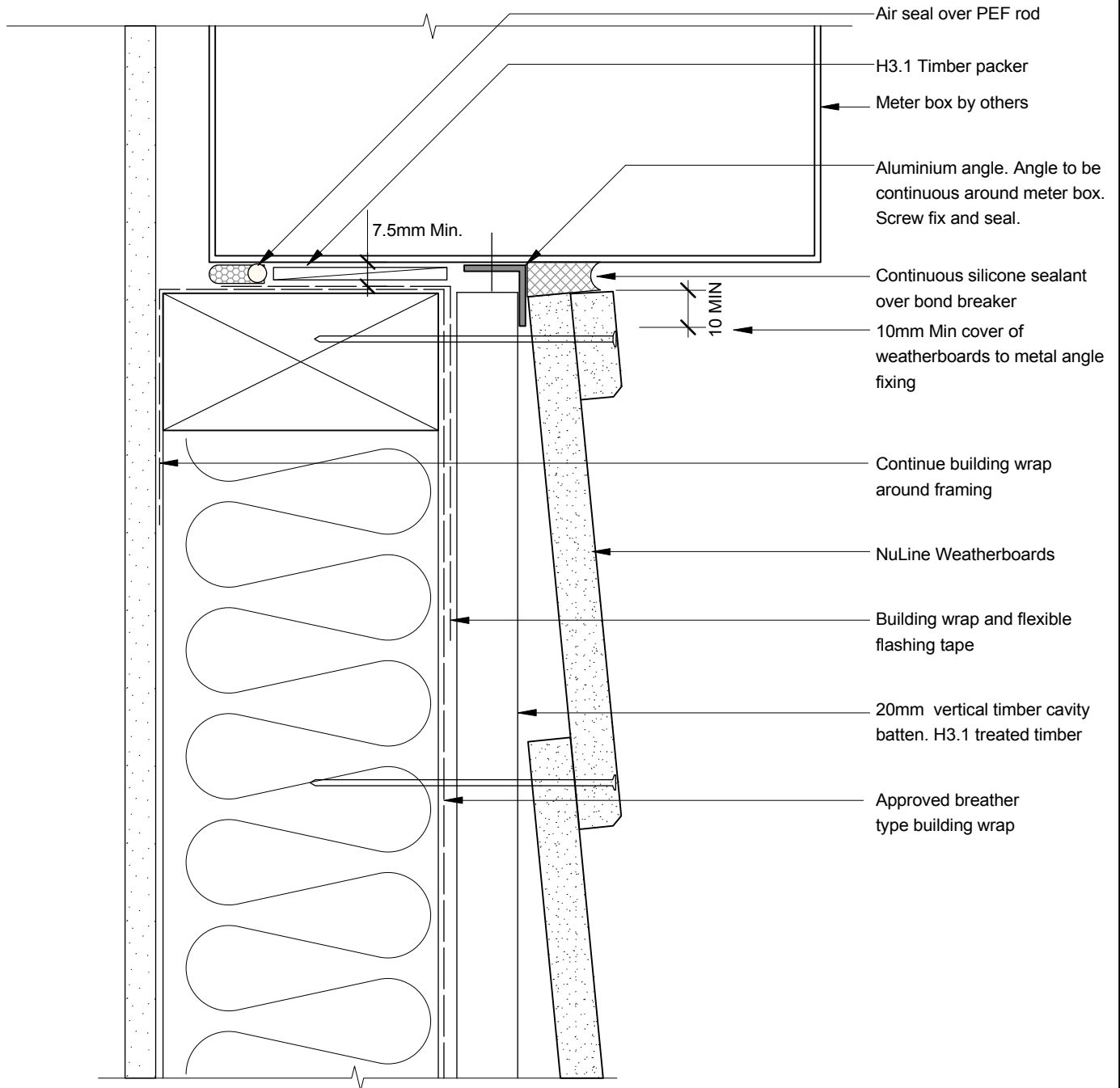
**BGC****Fibre Cement**PROFILE **NuLine Weatherboards**DATE **Jan 2009**DETAIL **Internal Corner Detail  
Direct Fixed**SCALE **1:2 @ A4**DETAIL NO. **NU-11 D**

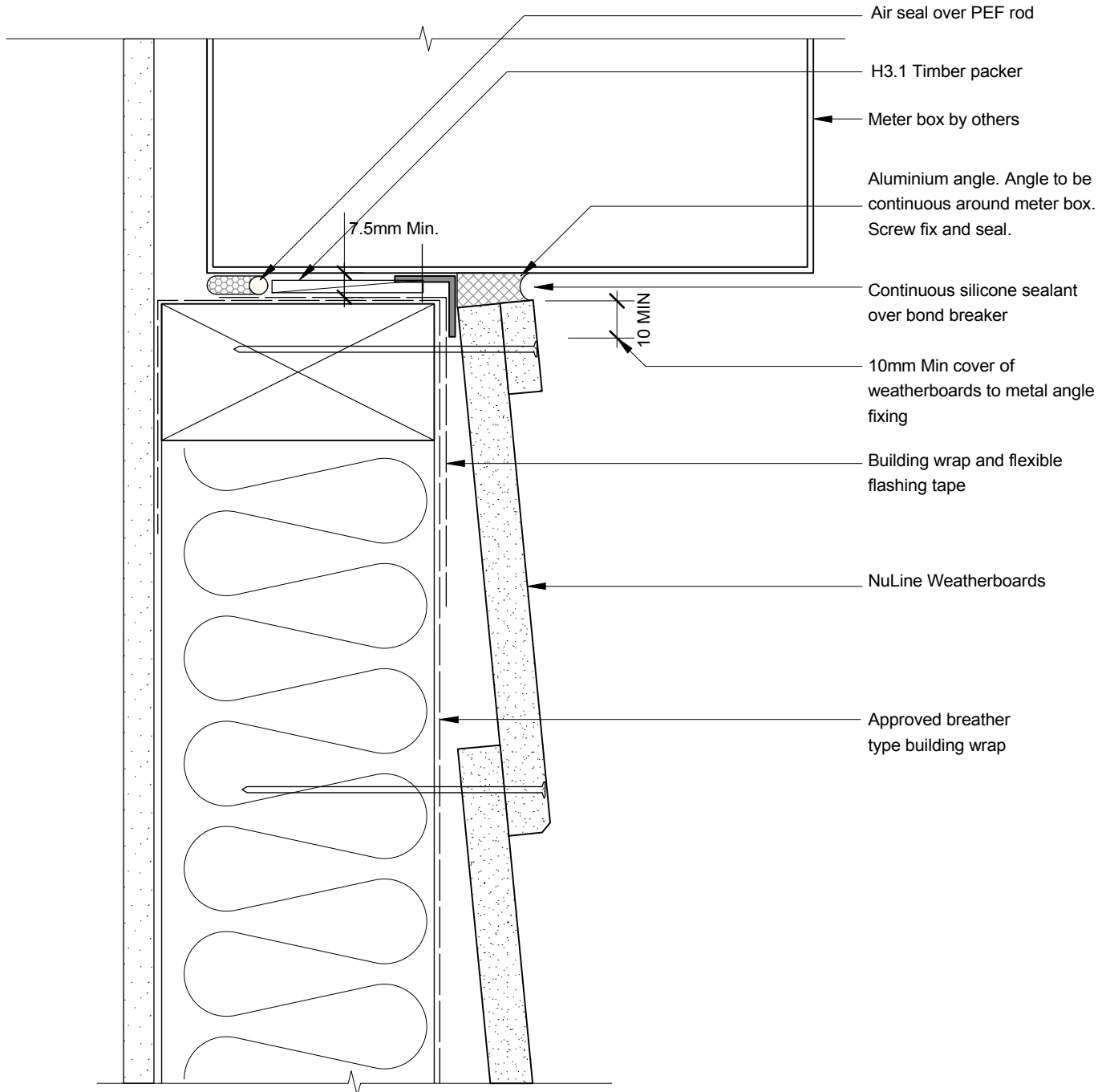
**BGC****Fibre Cement**PROFILE **NuLine Weatherboards**DATE **Jan 2009**DETAIL **Internal Corner Detail with BGC Profile  
Cavity Construction**SCALE **1:2 @ A4**DETAIL NO. **NU-12**

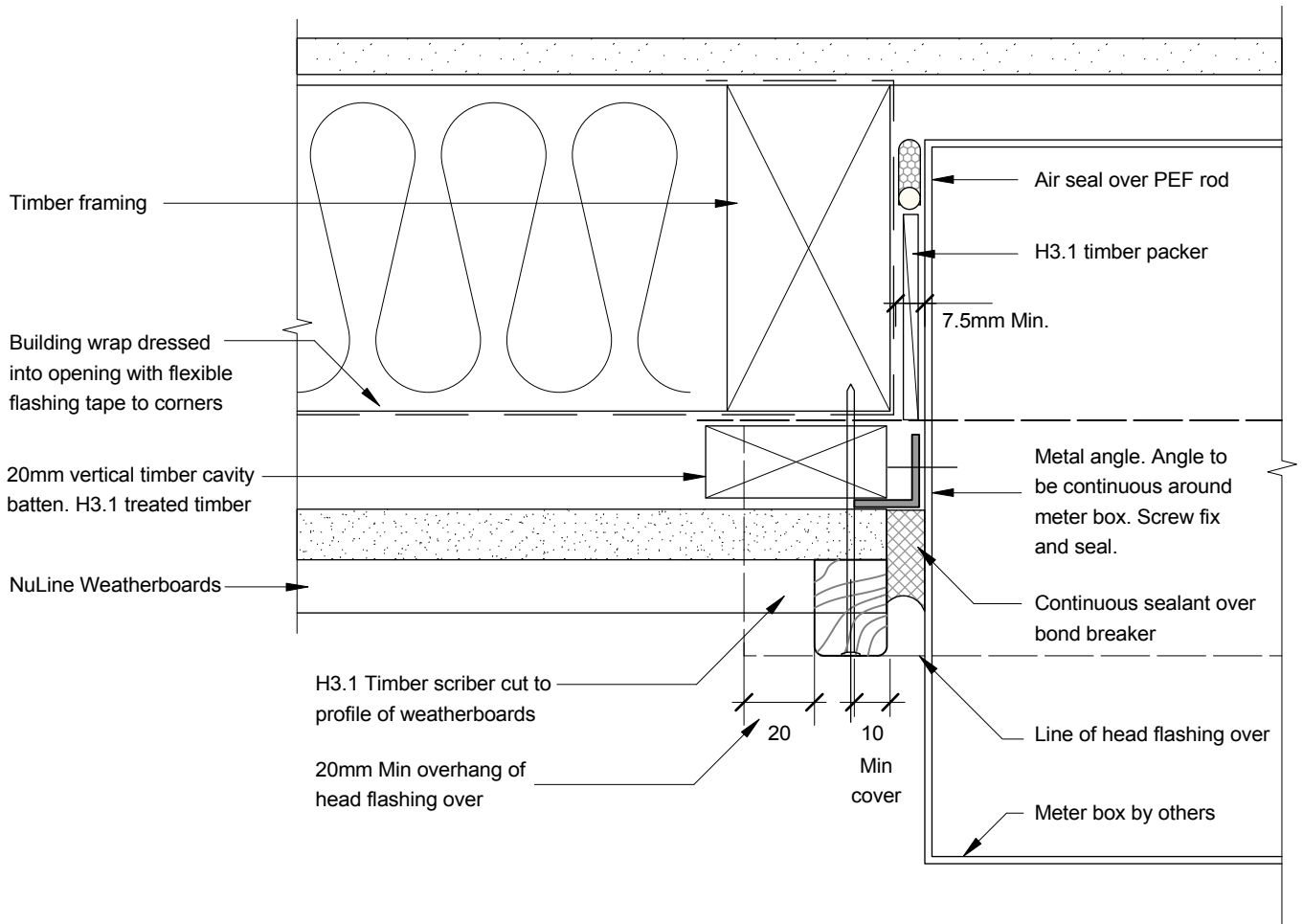
**BGC****Fibre Cement**PROFILE **NuLine Weatherboards**DATE **Jan 2009**DETAIL **Internal Corner Detail with BGC Profile  
Direct Fixed**SCALE **1:2 @ A4**DETAIL NO. **NU-12 D**

**BGC****Fibre Cement**PROFILE **NuLine Weatherboards**DATE **Jan 2009**DETAIL **Meter Box Head  
Cavity Construction**SCALE **1:2 @ A4**DETAIL NO. **NU-13**

**BGC****Fibre Cement**PROFILE **NuLine Weatherboards**DATE **Jan 2009**DETAIL **Meter Box Head  
Direct Fixed**SCALE **1:2 @ A4**DETAIL NO. **NU-13 D**

**BGC****Fibre Cement**PROFILE **NuLine Weatherboards**DATE **Jan 2009**DETAIL **Meter Box Sill  
Cavity Construction**SCALE **1:2 @ A4**DETAIL NO. **NU-14**

**BGC****Fibre Cement**PROFILE **NuLine Weatherboards**DATE **Jan 2009**DETAIL **Meter Box Sill  
Direct Fixed**SCALE **1:2 @ A4**DETAIL NO. **NU-14 D**



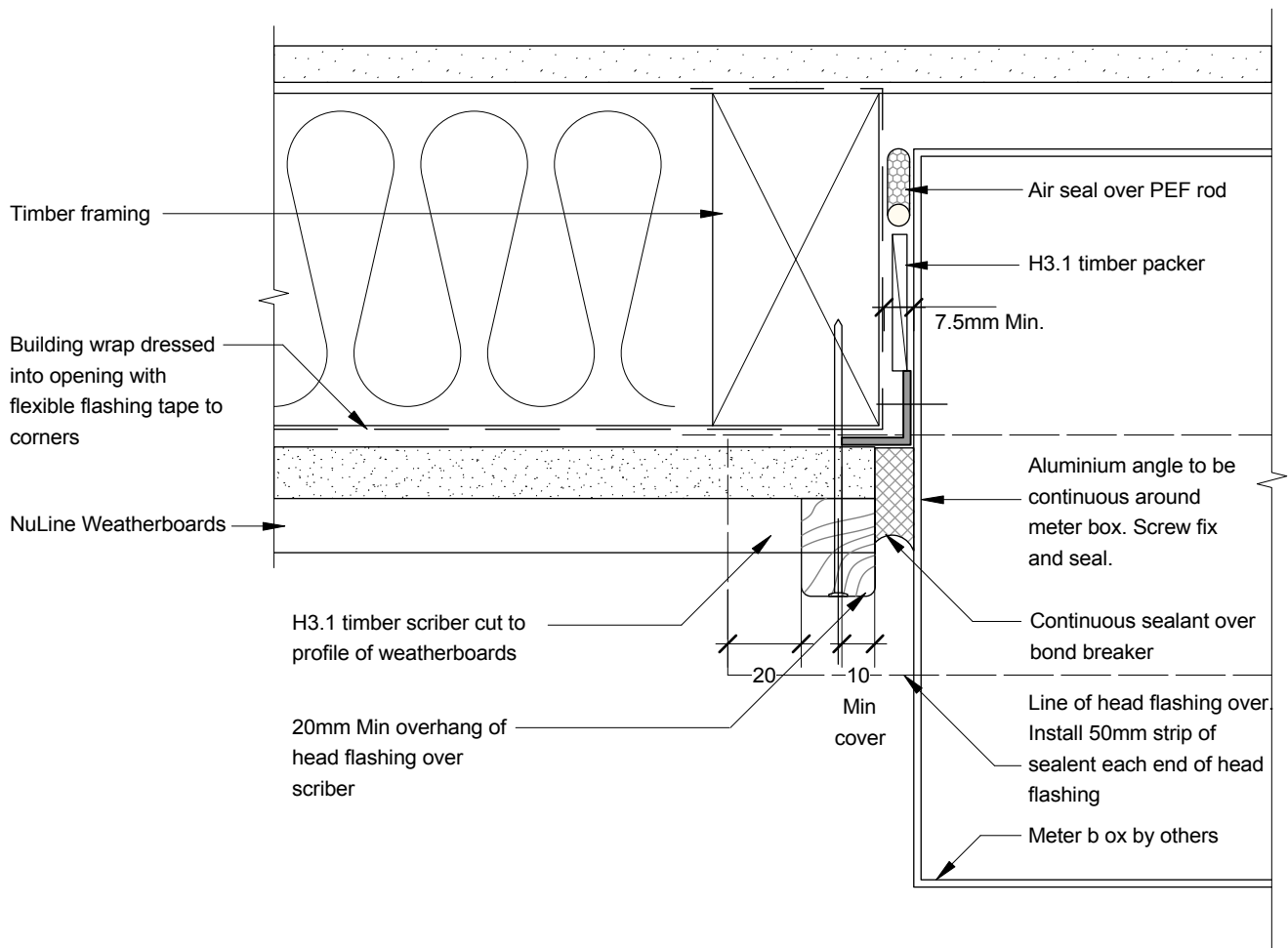
PROFILE NuLine Weatherboards

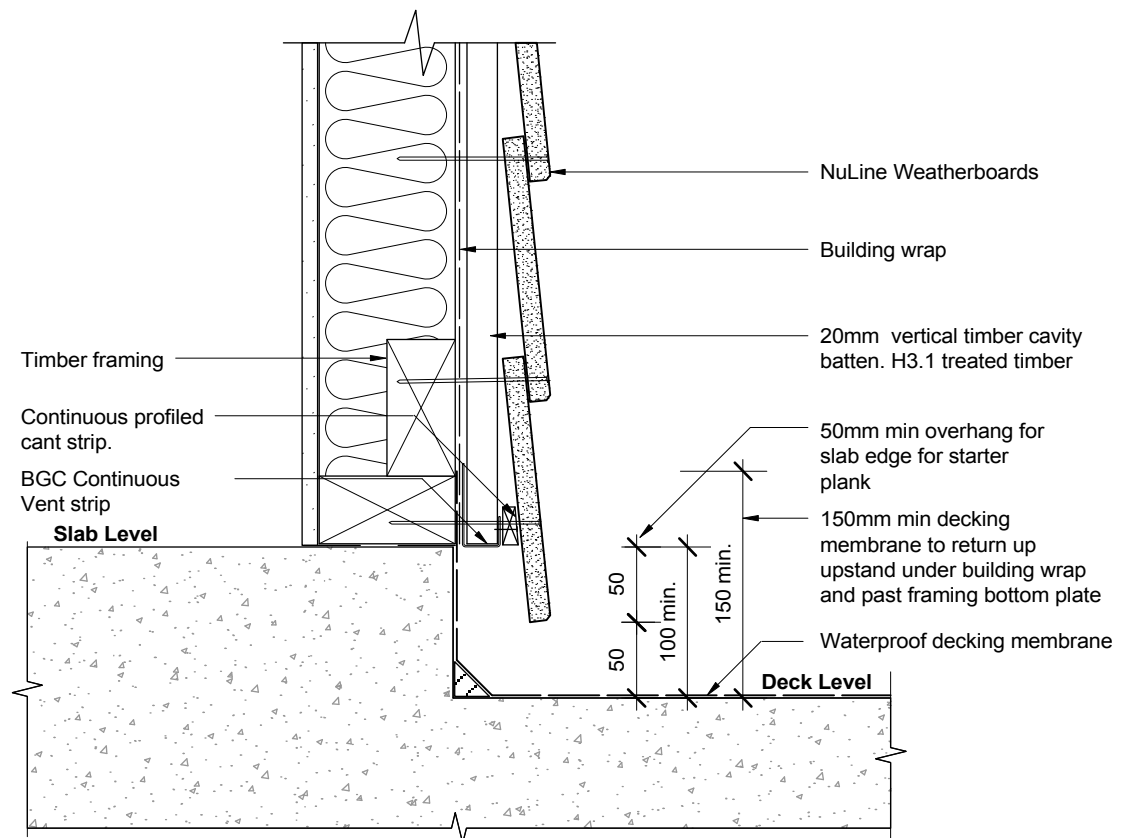
DATE Jan 2009

DETAIL Meter Box Jamb  
Cavity Construction

SCALE 1:2 @ A4

DETAIL NO. NU-15

**BGC****Fibre Cement**PROFILE **NuLine Weatherboards**DATE **Jan 2009**DETAIL **Meter Box Jamb  
Direct Fixed**SCALE **1:2 @ A4**DETAIL NO. **NU-15 D**

**BGC****Fibre Cement**

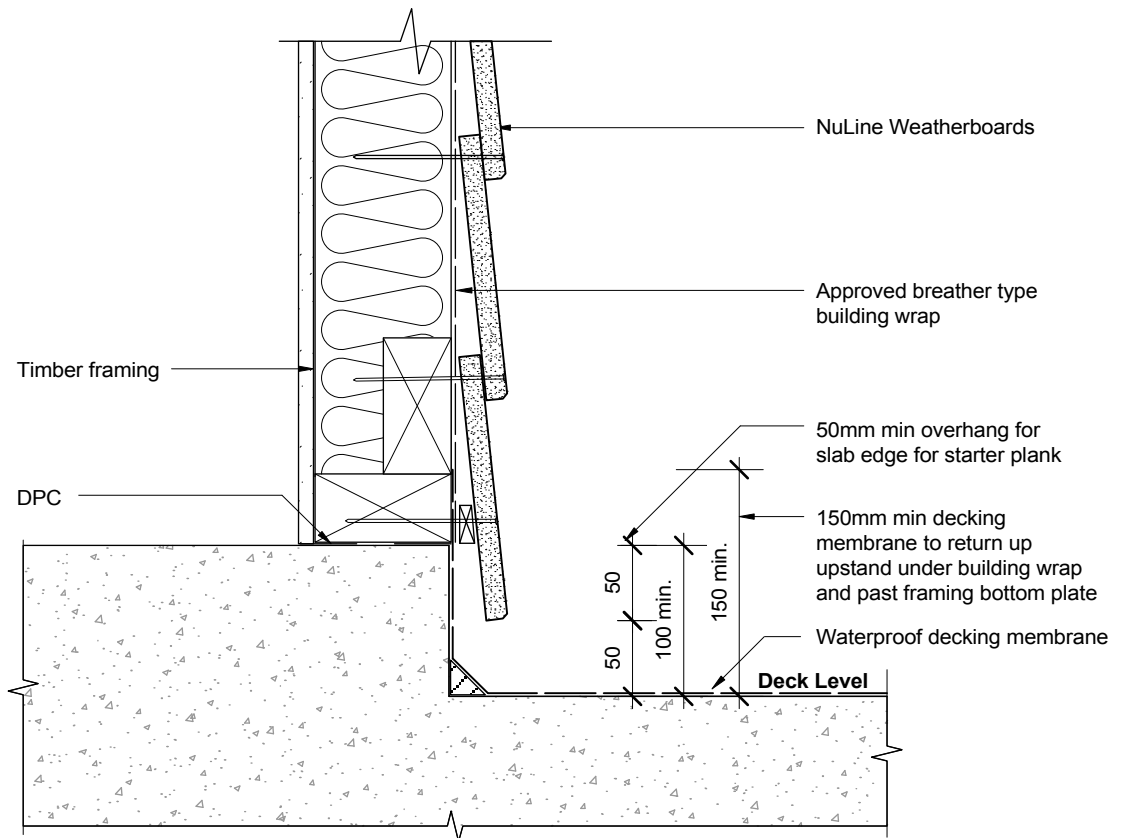
PROFILE NuLine Weatherboards

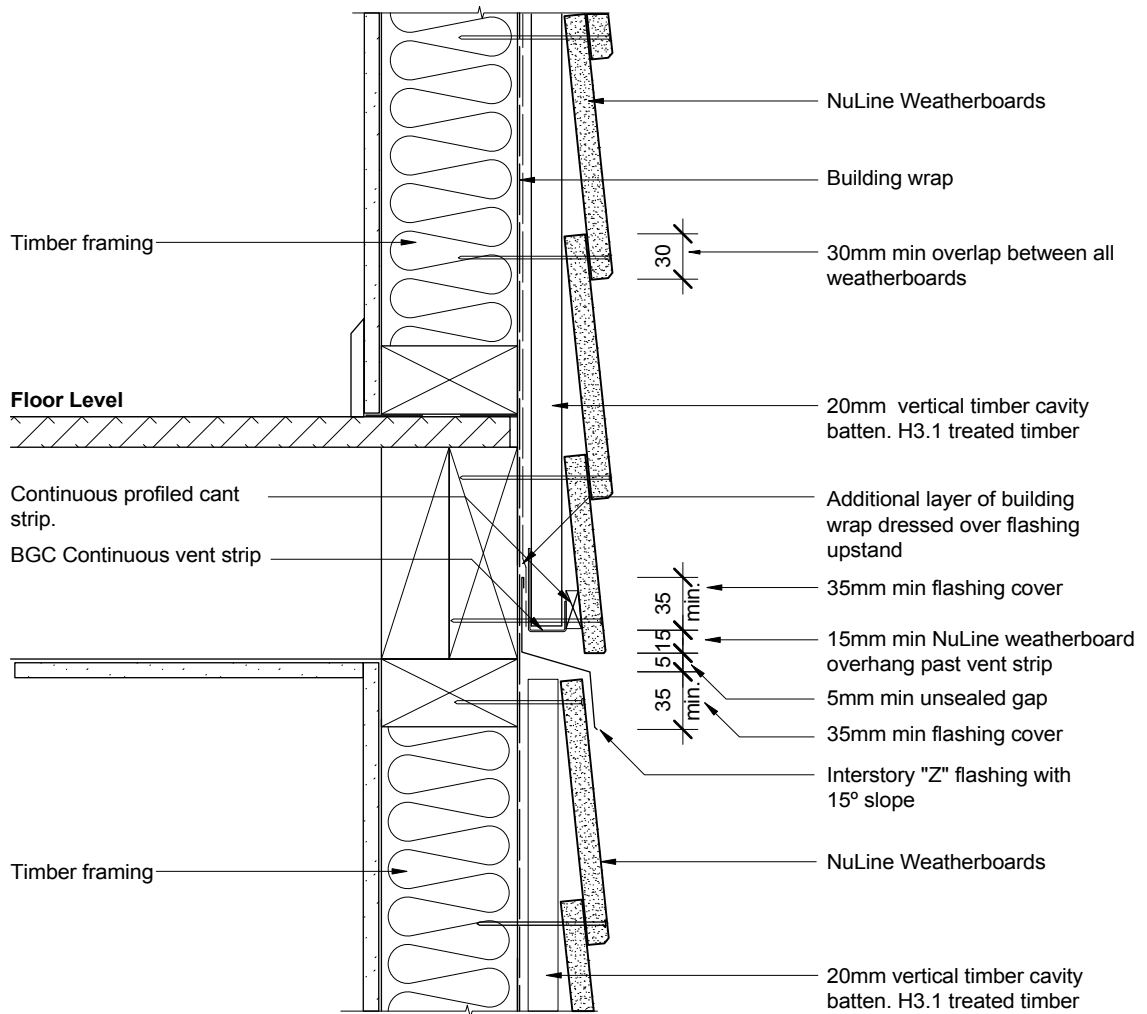
DATE Jan 2009

DETAIL Enclosed Deck Detail  
Cavity Construction

SCALE 1:5 @ A4

DETAIL NO. NU-16

**BGC****Fibre Cement**PROFILE **NuLine Weatherboards**DATE **Jan 2009**DETAIL **Enclosed Deck Detail  
Direct Fixed**SCALE **1:5 @ A4**DETAIL NO. **NU-16 D**



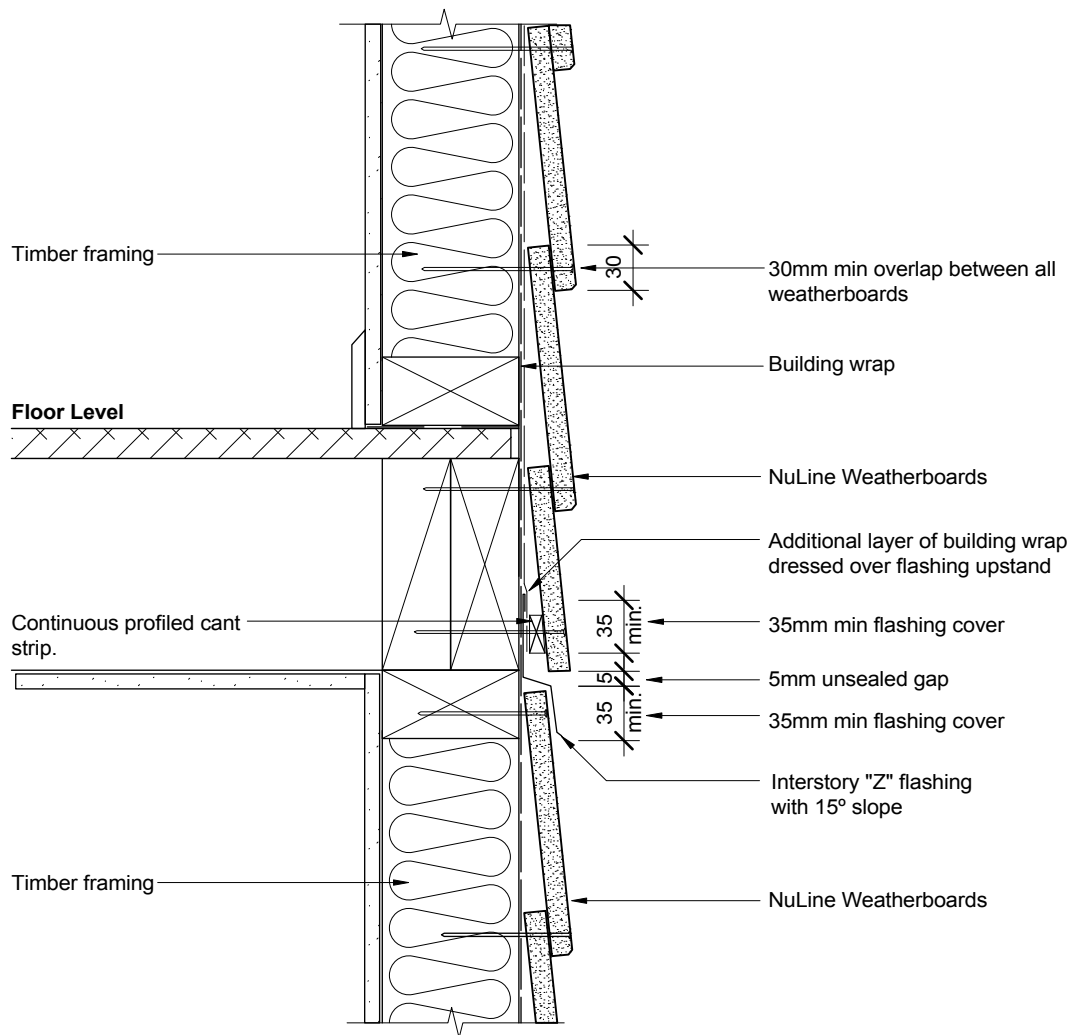
PROFILE NuLine Weatherboards

DATE Jan 2009

DETAIL Interstorey Drainage Joint Detail  
Cavity Construction

SCALE 1:5 @ A4

DETAIL NO. NU-17

**BGC****Fibre Cement**

PROFILE NuLine Weatherboards

DATE Jan 2009

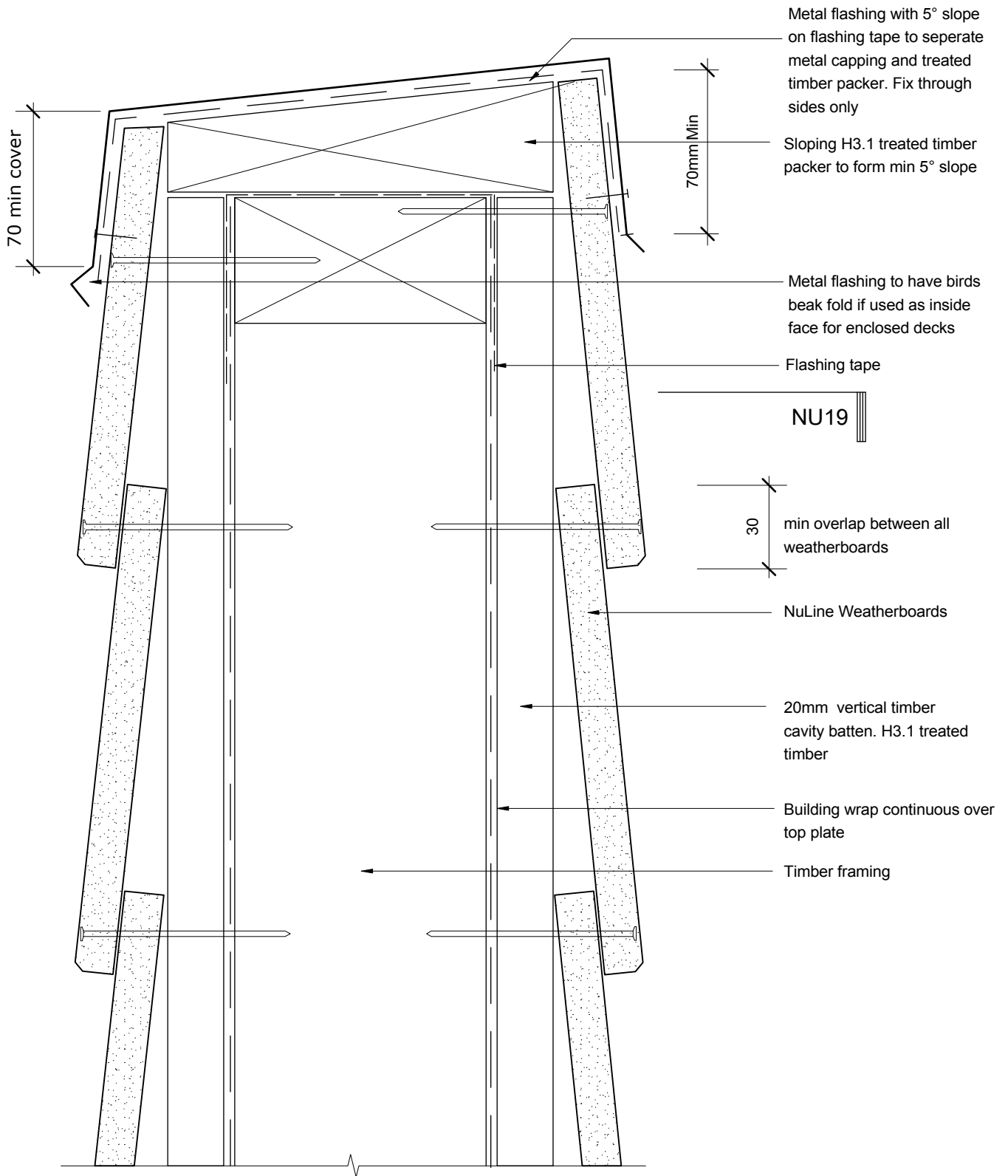
DETAIL Interstorey Control Joint Detail  
Direct Fixed

SCALE 1:5 @ A4

DETAIL NO. NU-17 D

# BGC

# Fibre Cement



THIS DETAIL IS TO BE  
USED WITH DETAIL NU19

PROFILE **NuLine Weatherboards**  
DETAIL **Enclosed Balustrade/Parapet Wall  
Cavity Construction**

DATE **Jan 2009**

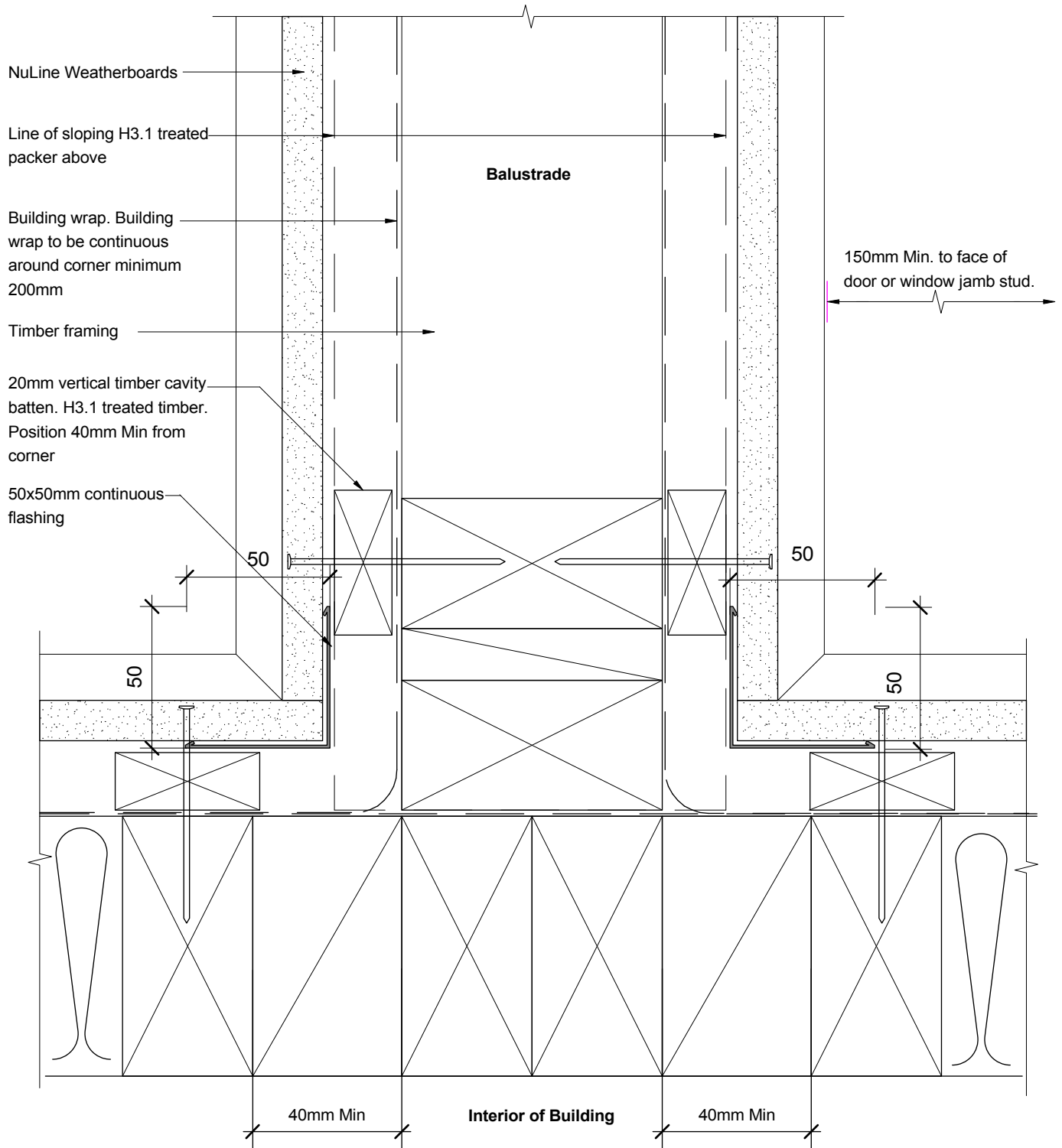
SCALE **1:2 @ A4**

DETAIL NO. **NU-18**



# BGC

# Fibre Cement



THIS DETAIL IS TO BE USED WITH DETAIL NU18

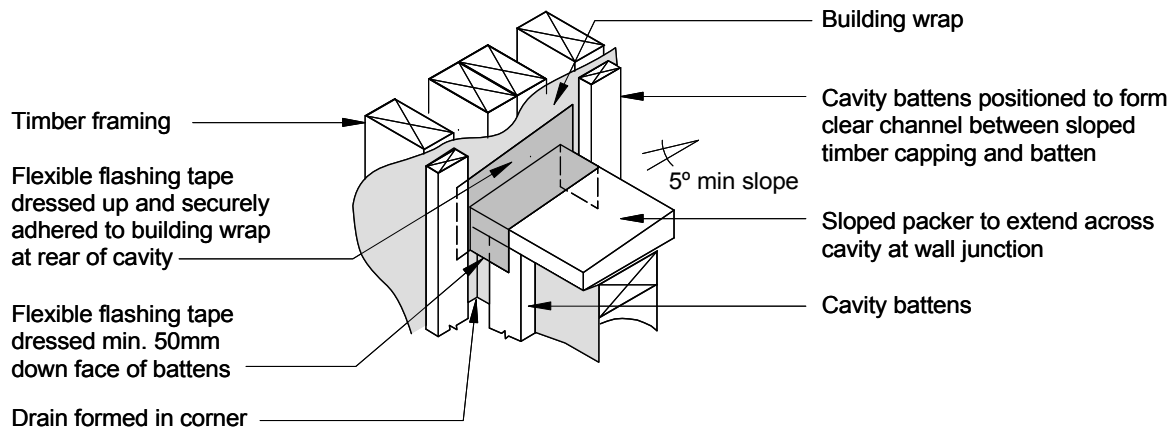
PROFILE NuLine Weatherboards

DATE Jan 2009

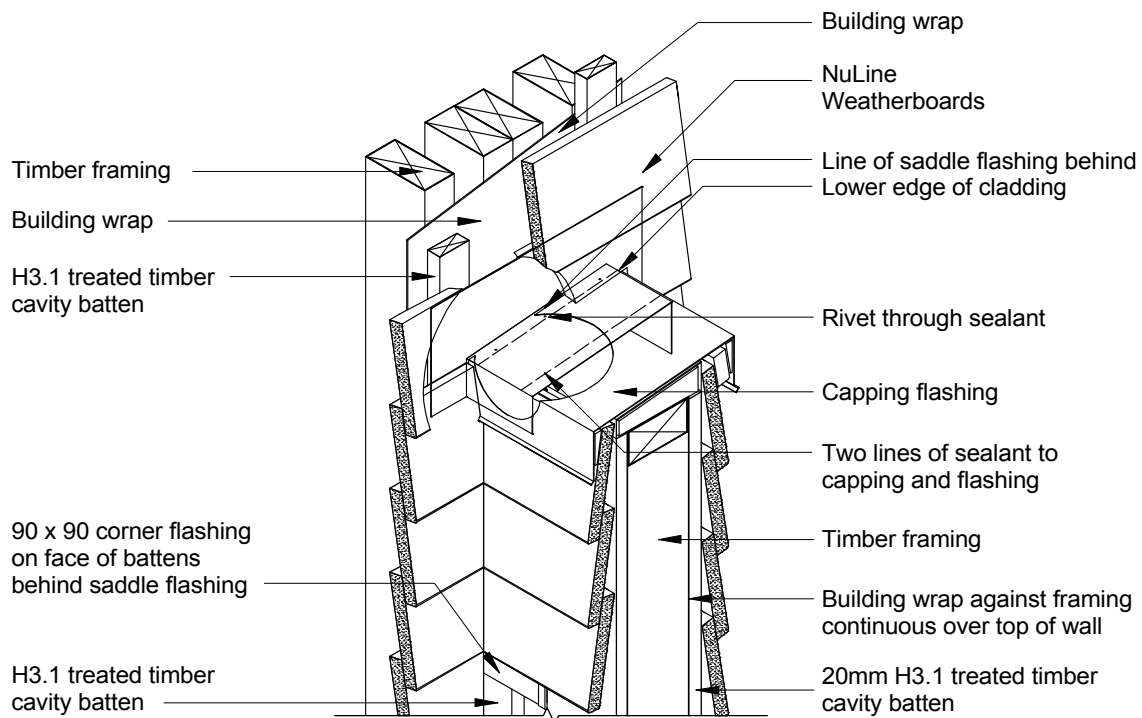
DETAIL Enclosed Balustrade Wall  
Plan Detail Cavity Construction

SCALE 1:2 @ A4

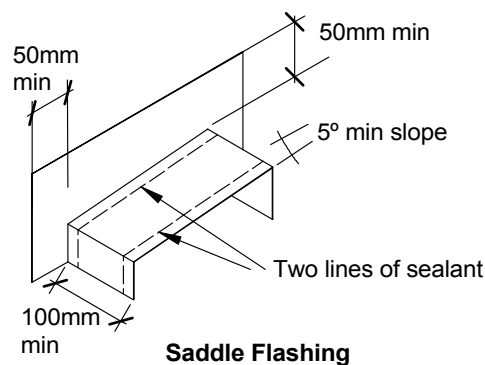
DETAIL NO. NU-19



**STAGE 1 - Flexible Flashing Installation**



**STAGE 2 - Saddle Flashing Installation**



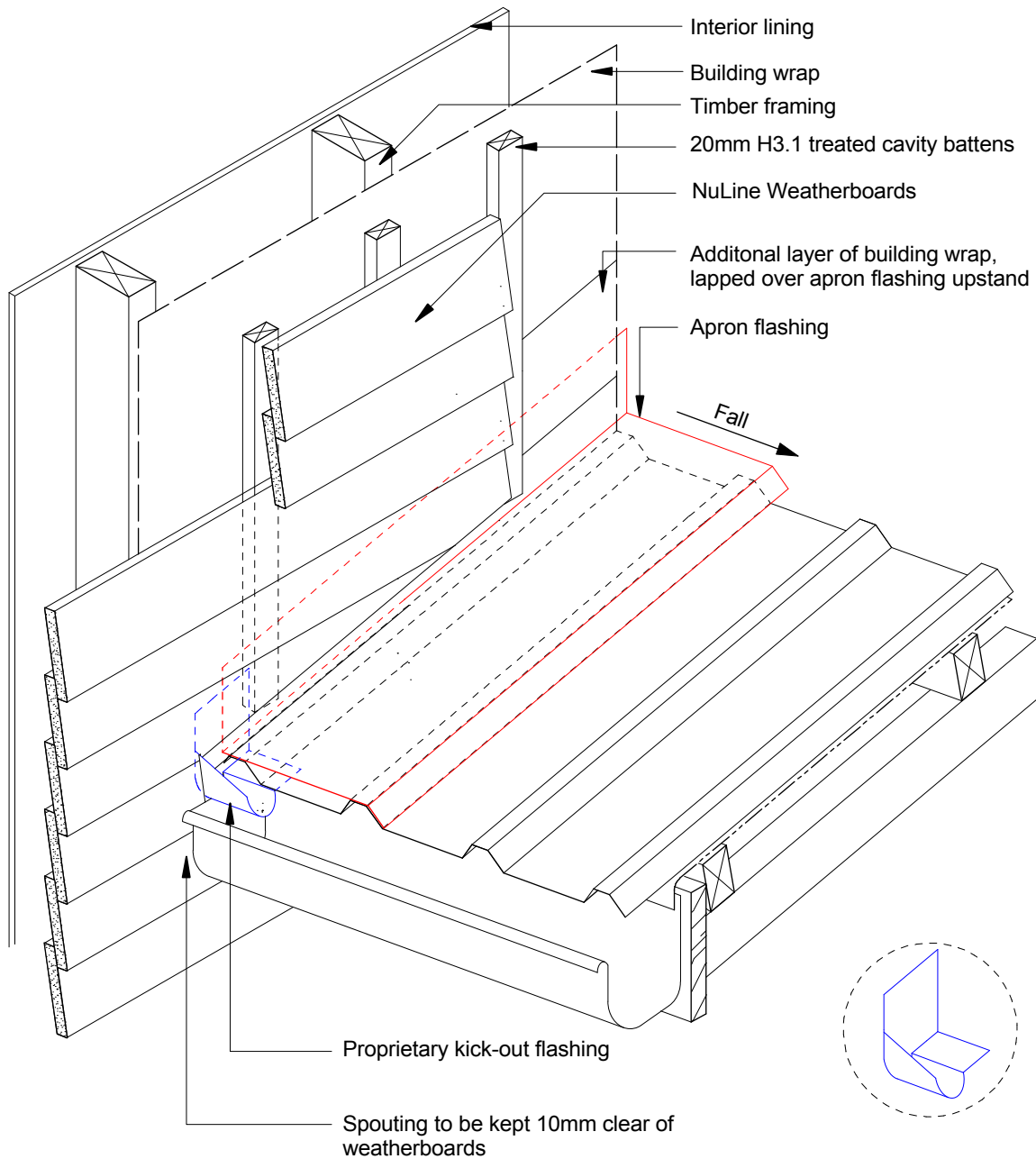
PROFILE NuLine Weatherboards

DATE Jan 2009

DETAIL Balustrade To Wall Junction  
Detail Cavity Construction

SCALE 1:10 @ A4

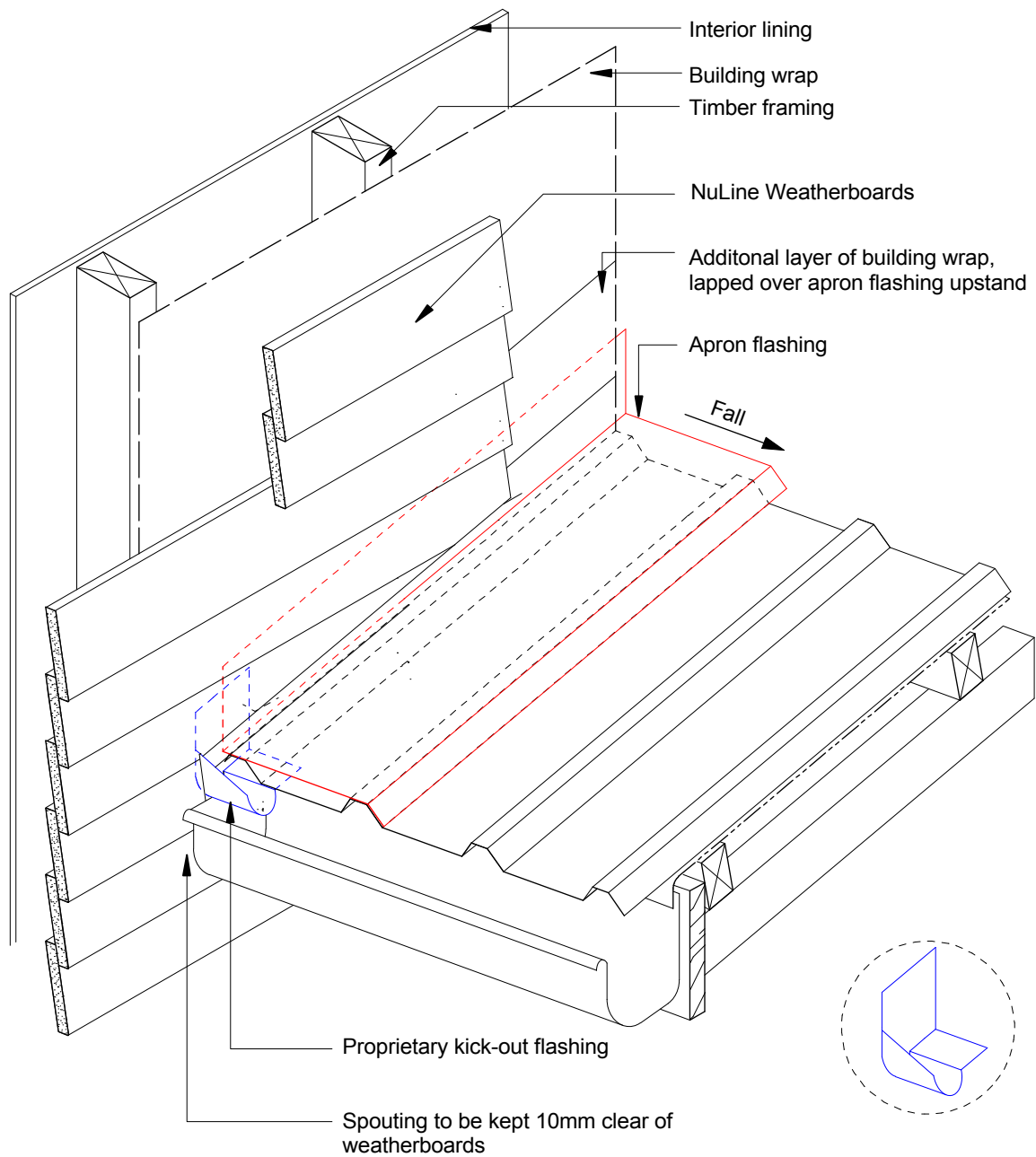
DETAIL NO. NU-20

**BGC****Fibre Cement**

Note:  
Provide transition tray at fascia / wall junction in accordance with NZBC Acceptable Solution E2/AS1

PROFILE NuLine Weatherboards  
DETAIL Gutter To Wall Junction  
Detail Cavity Construction

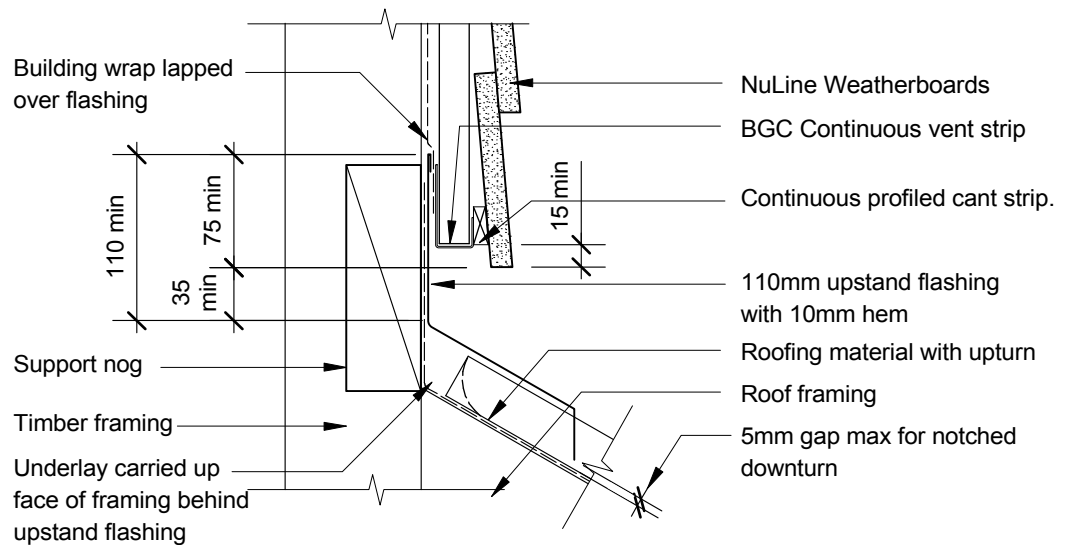
DATE Jan 2009  
SCALE 1:5 @ A4  
DETAIL NO. NU-21

**BGC****Fibre Cement**

Note:  
Provide transition tray at fascia / wall junction in accordance with NZBC Acceptable Solution E2/AS1

PROFILE NuLine Weatherboards  
DETAIL Gutter To Wall Junction  
Detail Direct Fixed

DATE Jan 2009  
SCALE 1:5 @ A4  
DETAIL NO. NU-21 D

**Note:**

Refer to NZBC Acceptable Solutions E2 / AS1 Table 7 for flashing cover requirements over roof cladding.

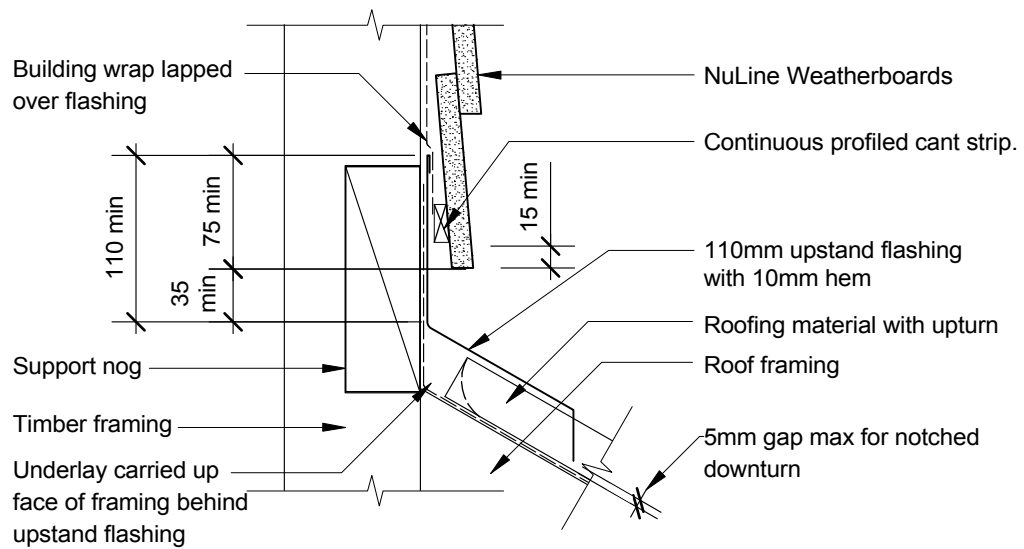
PROFILE **NuLine Weatherboards**

DETAIL **Transverse Apron Flashing  
Detail Cavity Construction**

DATE **Jan 2009**

SCALE **1:5 @ A4**

DETAIL NO. **NU-22**



**Note:**

Refer to NZBC Acceptable Solutions E2 / AS1 Table 7 for flashing cover requirements over roof cladding.

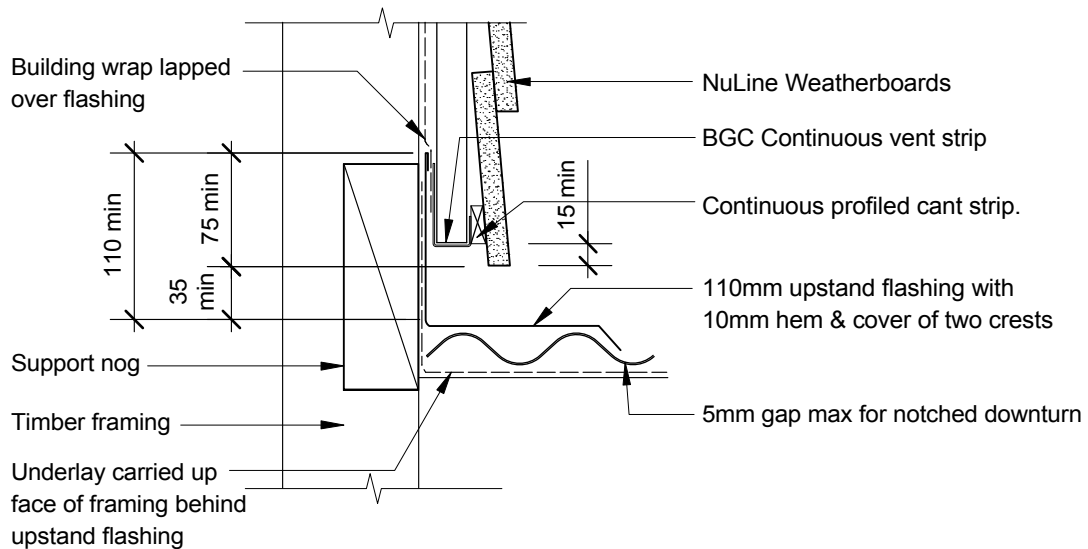
PROFILE NuLine Weatherboards

DATE Jan 2009

DETAIL Transverse Apron Flashing  
Detail Direct Fixed

SCALE 1:5 @ A4

DETAIL NO. NU-22 D



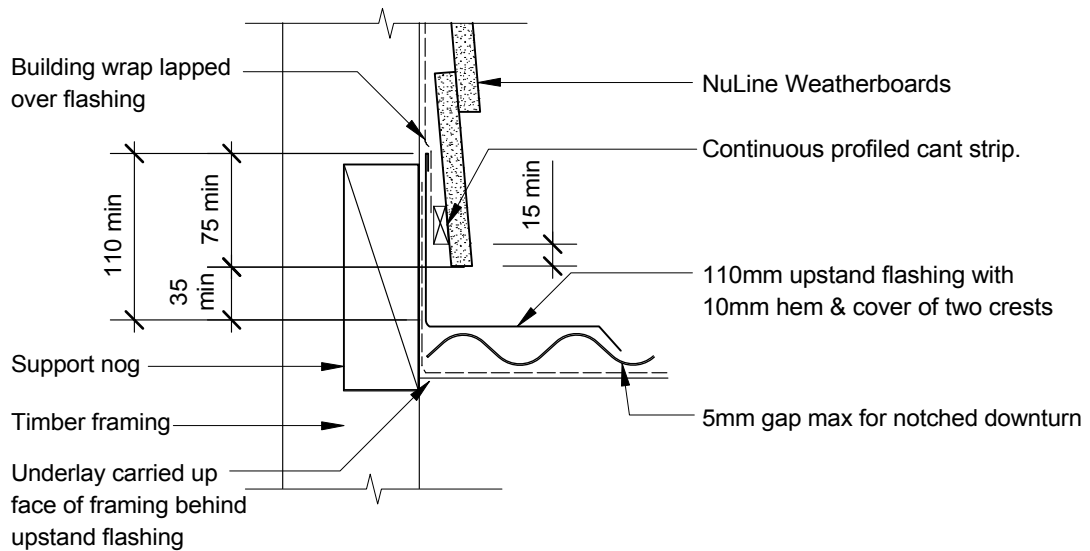
PROFILE NuLine Weatherboards

DETAIL Parallel Apron Flashing  
Detail Cavity Construction

DATE Jan 2009

SCALE 1:5 @ A4

DETAIL NO. NU-23

**BGC****Fibre Cement**

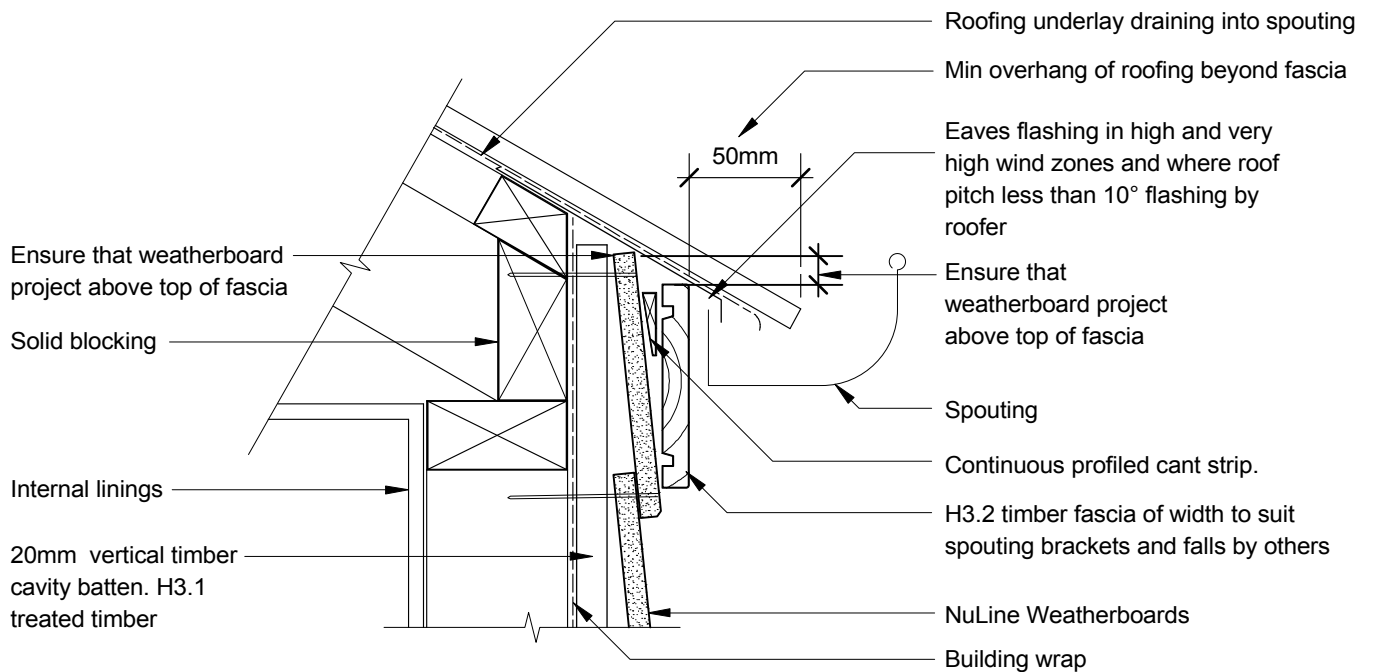
PROFILE NuLine Weatherboards

DATE Jan 2009

DETAIL Parallel Apron Flashing  
Detail Direct Fixed

SCALE 1:5 @ A4

DETAIL NO. NU-23 D



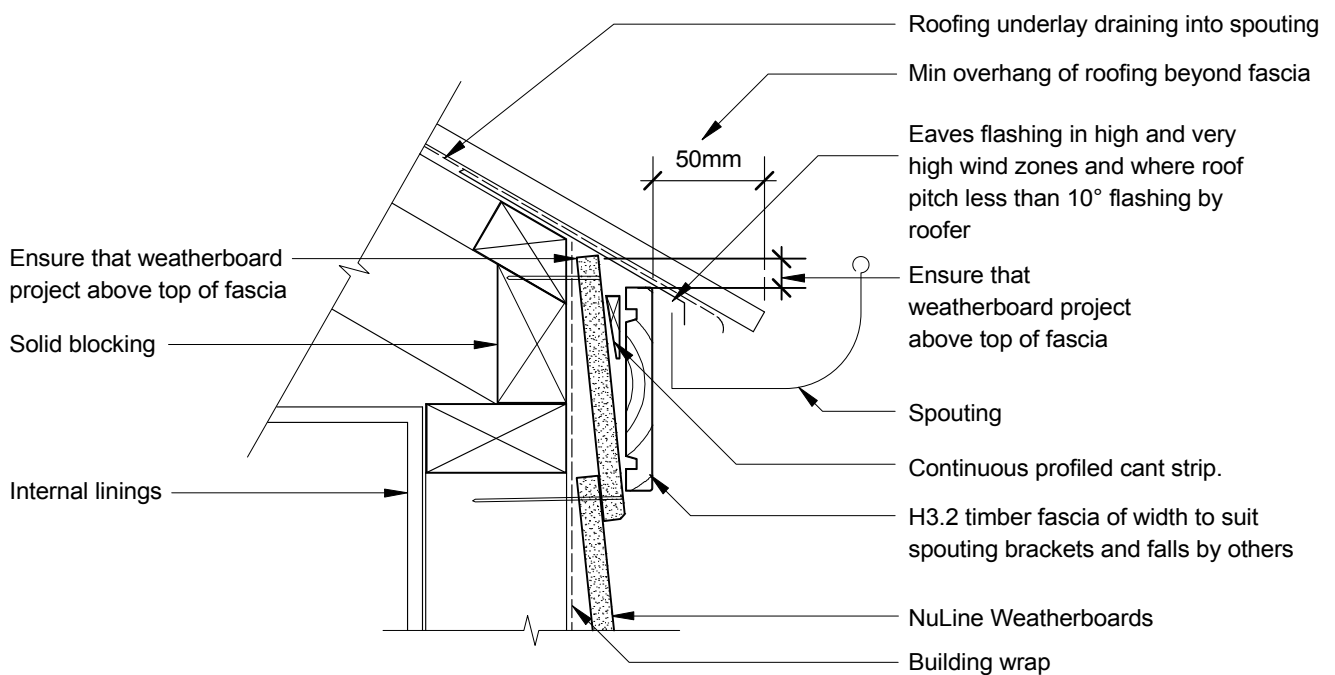
PROFILE NuLine Weatherboards

DATE Jan 2009

DETAIL Eaves With No Soffit Detail  
Cavity Construction

SCALE 1:5 @ A4

DETAIL NO. NU-24



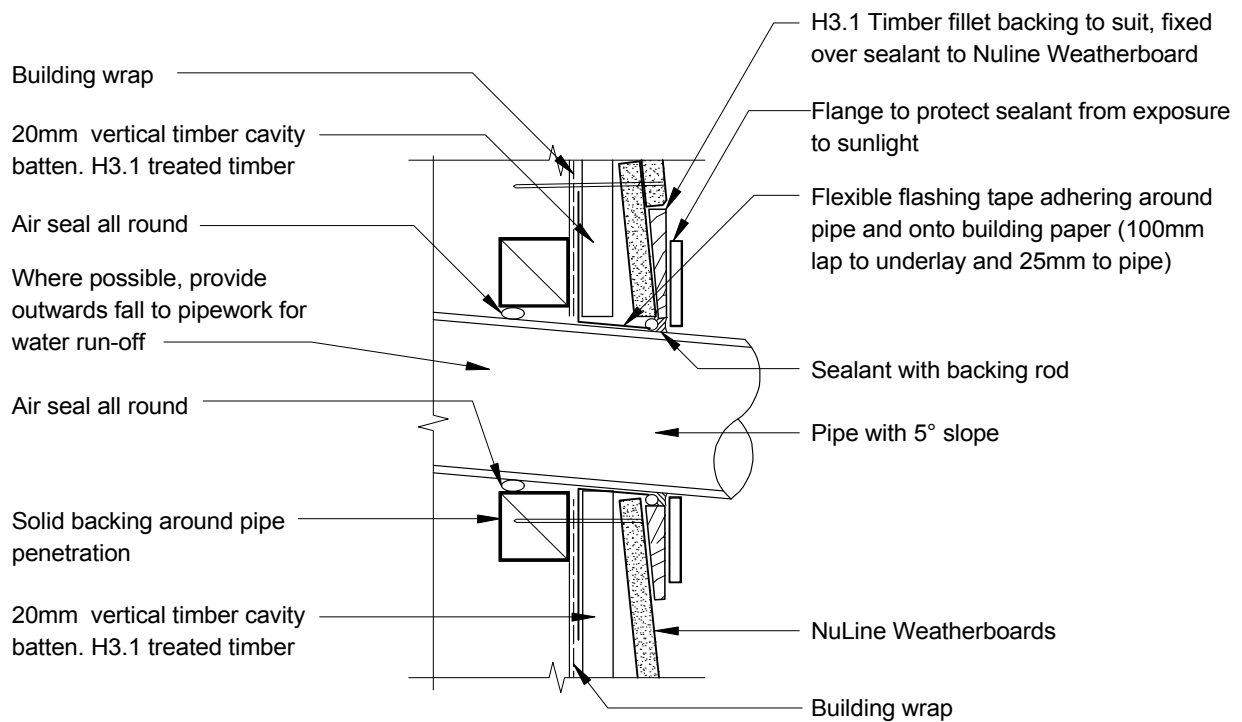
PROFILE NuLine Weatherboards

DATE Jan 2009

DETAIL Eaves With No Soffit Detail  
Direct Fixed

SCALE 1:5 @ A4

DETAIL NO. NU-24 D



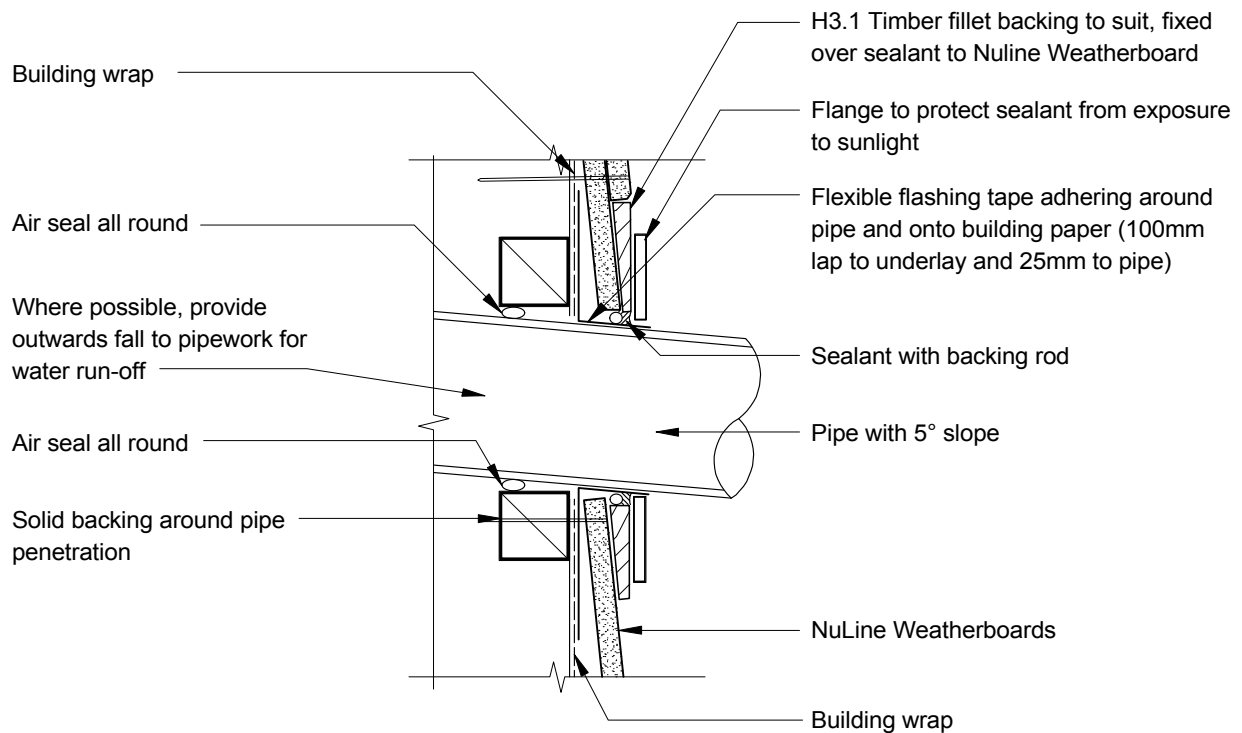
PROFILE NuLine Weatherboards

DATE Jan 2009

DETAIL Pipe Penetration Detail  
Cavity Construction

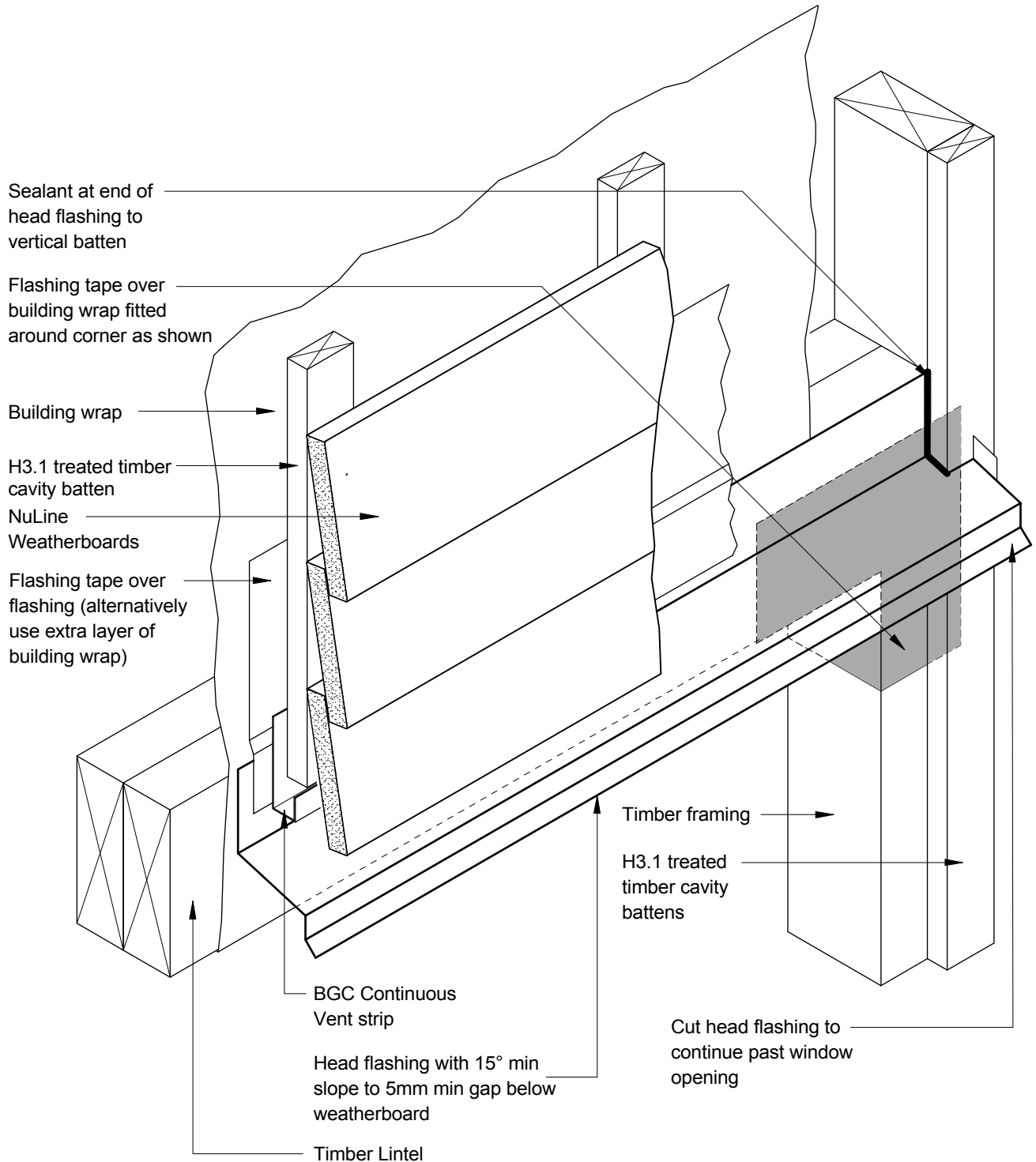
SCALE 1:5 @ A4

DETAIL NO. NU-25



PROFILE NuLine Weatherboards  
DETAIL Pipe Penetration Detail  
Direct Fixed

DATE Jan 2009  
SCALE 1:5 @ A4  
DETAIL NO. NU-25 D

**BGC****Fibre Cement**PROFILE **NuLine Weatherboards**DATE **Jan 2009**DETAIL **Window Head/Jamb Junction  
Detail Cavity Construction**SCALE **1:5 @ A4**DETAIL NO. **NU-26**

Note: Accurate slot to be cut in weatherboard to enable fit around head flashing. Prevent moisture ingress at end of slot by sealing gap. Refer detail NU-07 D

Flashing tape over building wrap fitted around corner as shown

Building wrap

NuLine Weatherboards

Flashing tape over flashing (alternatively use extra layer of building wrap)

Timber framing

Head flashing to 5mm min gap below weatherboard

Timber Lintel

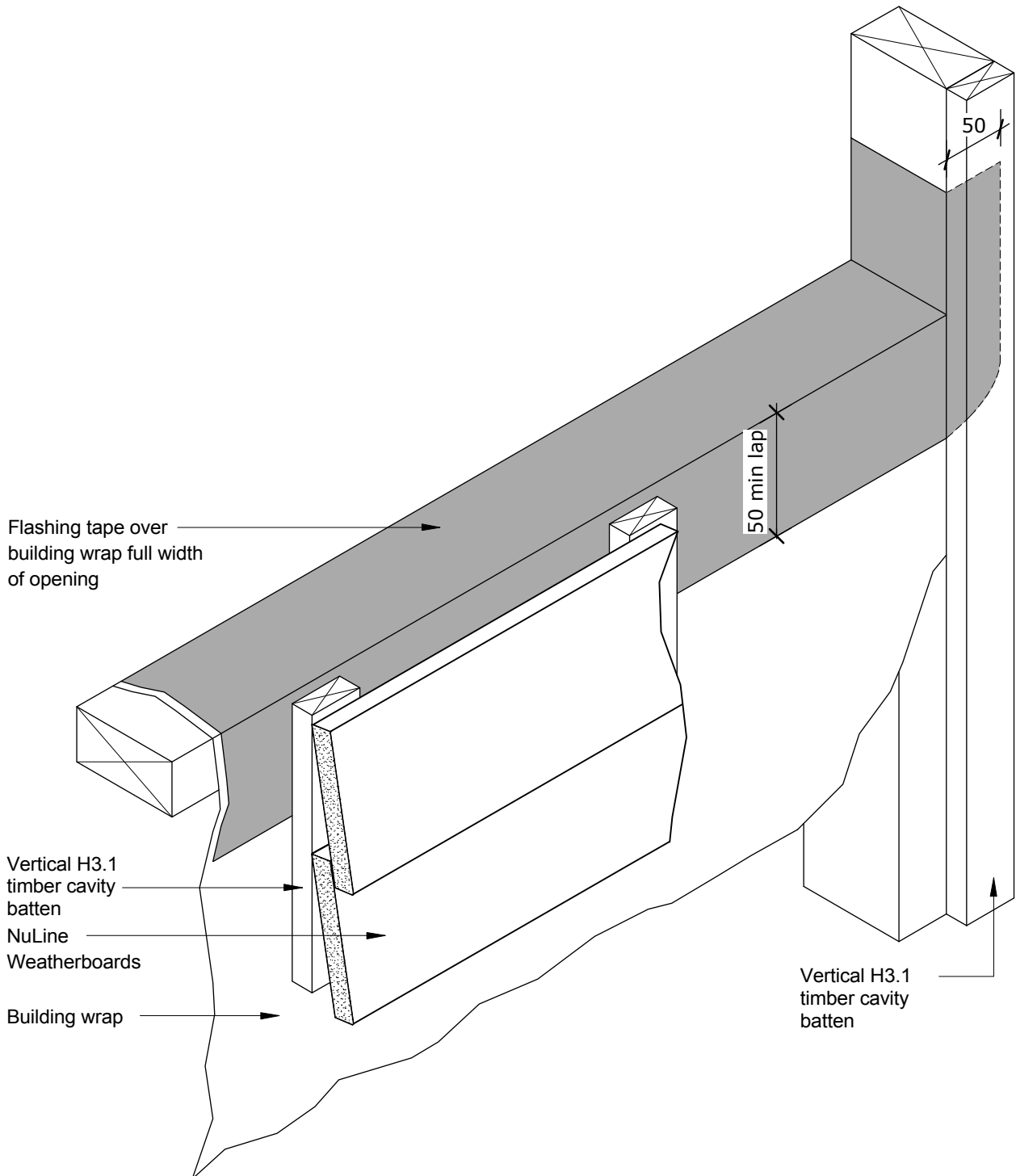
PROFILE NuLine Weatherboards

DETAIL Window Head/Jamb Junction  
Detail Direct Fixed

DATE Jan 2009

SCALE 1:5 @ A4

DETAIL NO. NU-26 D

**BGC****Fibre Cement**

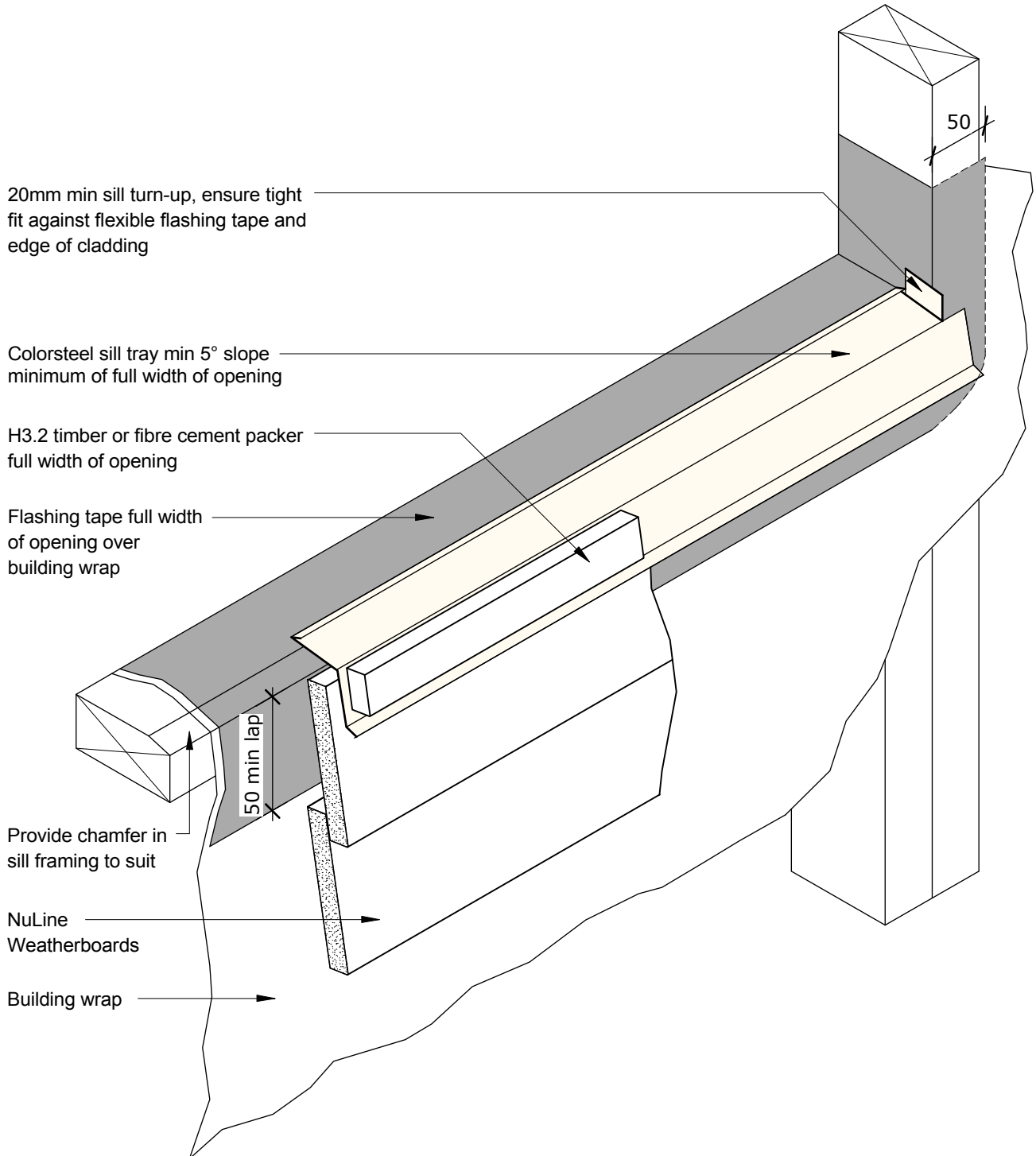
PROFILE NuLine Weatherboards

DATE Jan 2009

DETAIL Window Sill/Jamb Junction  
Detail Cavity Construction

SCALE 1:5 @ A4

DETAIL NO. NU-27

**BGC****Fibre Cement**PROFILE **NuLine Weatherboards**DATE **Jan 2009**DETAIL **Window Sill/Jamb Junction  
Detail Direct Fixed**SCALE **1:5 @ A4**DETAIL NO. **NU-27 D**